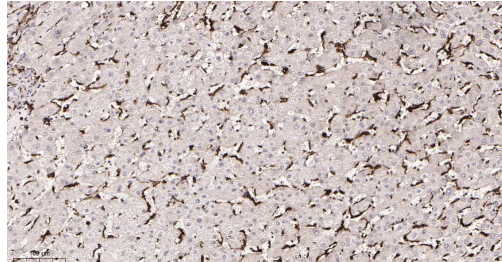
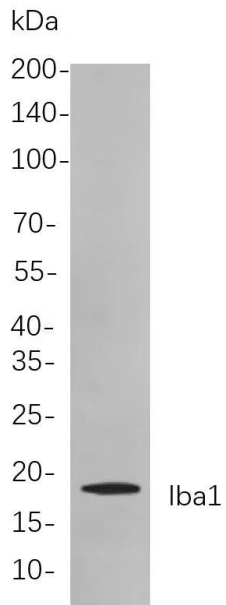
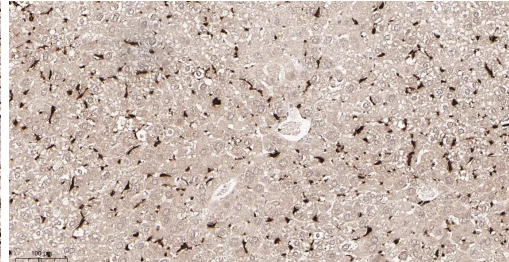

Product name:	Iba1 Rabbit Monoclonal Antibody
Cat number:	MABN21499
Conjugate:	Unconjugated
Size:	100µL
Concentration:	1mg/ml
Host:	Rabbit
Isotype:	IgG,Kappa
Immunogen:	A synthetic peptide of human Iba1.
Reactivity:	Human,Mouse,Rat
Applications:	WB 1:1000-1:5000,IHC 1:2000-1:4000,ICC/IF 1:200-1:1000,ELISA 1:5000-1:20000,IP 1:50-1:200
Molecular Weight:	Calculated MW:17kD;Observed MW:17kD
Purification:	Affinity purification
Form:	liquid
Buffer:	PBS, 50% glycerol, 0.05% Proclin 300, 0.05%protective protein
Storage:	Store at 4°C short term. Aliquot and store at -20°C long term. Avoid freeze/thaw cycles.
Background:	Cell localization:Cytoplasm.This gene encodes a protein that binds actin and calcium. This gene is induced by cytokines and interferon and may promote macrophage activation and growth of vascular smooth muscle cells and T-lymphocytes. Polymorphisms in this gene may be associated with systemic sclerosis. Alternative splicing results in multiple transcript variants, but the full-length and coding nature of some of these variants is not certain. [provided by RefSeq, Jan 2016],



Immunohistochemical analysis of paraffin-embedded Human liver tissue. 1. Iba1 Rabbit Monoclonal Antibody was diluted at 1:200(4°C,overnight). 2. EDTA pH 9.0 was used for antibody retrieval(>98°C,20min). 3.Secondary antibody was diluted at 1:200(room temperature, 30min).



Immunohistochemical analysis of paraffin-embedded Mouse liver tissue. 1. Iba1 Rabbit Monoclonal Antibody was diluted at 1:200(4°C,overnight). 2. EDTA pH 9.0 was used for antibody retrieval(>98°C,20min). 3.Secondary antibody was diluted at 1:200(room temperature, 30min).