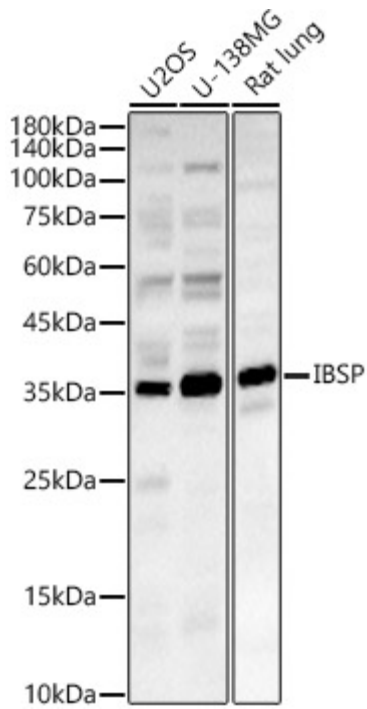

| | |
|--------------------------|--|
| Product name: | IBSP Rabbit pAb |
| Cat number: | AB-81521 |
| Conjugate: | Unconjugated |
| Size: | 100 ug |
| Concentration: | 1mg/ml |
| Host: | Rabbit |
| Isotype: | IgG |
| Immunogen: | Synthetic peptide. This information is considered to be commercially sensitive. |
| Reactivity: | Human,Mouse,Rat |
| Applications: | WB 1:500 - 1:2000 ELISA Recommended starting concentration is 1 µg/mL. Please optimize the concentration based on your specific assay requirements. |
| Molecular Weight: | 35kDa |
| Purification: | Affinity purification |
| Form: | liquid |
| Buffer: | PBS containing 50% glycerol, preserved with proclin300 or sodium azide (as specified on the Certificate of Analysis), pH 7.3. |
| Storage: | Store at -20°C. Avoid freeze / thaw cycles. |
| Background: | The protein encoded by this gene is a major structural protein of the bone matrix. It constitutes approximately 12% of the noncollagenous proteins in human bone and is synthesized by skeletal-associated cell types, including hypertrophic chondrocytes, osteoblasts, osteocytes, and osteoclasts. The only extraskeletal site of its synthesis is the trophoblast. This protein binds to calcium and hydroxyapatite via its acidic amino acid clusters, and mediates cell attachment through an RGD sequence that recognizes the vitronectin receptor. |



Western blot analysis of various lysates, using IBSP Rabbit pAb (AB-81521) at 1:2500 dilution.

Secondary antibody: HRP-conjugated Goat anti-Rabbit IgG (H+L) at 1:10000 dilution.

Lysates/proteins: 25 μ g per lane.

Blocking buffer: 3% nonfat dry milk in TBST. Detection: ECL pico.

Exposure time: 90s.