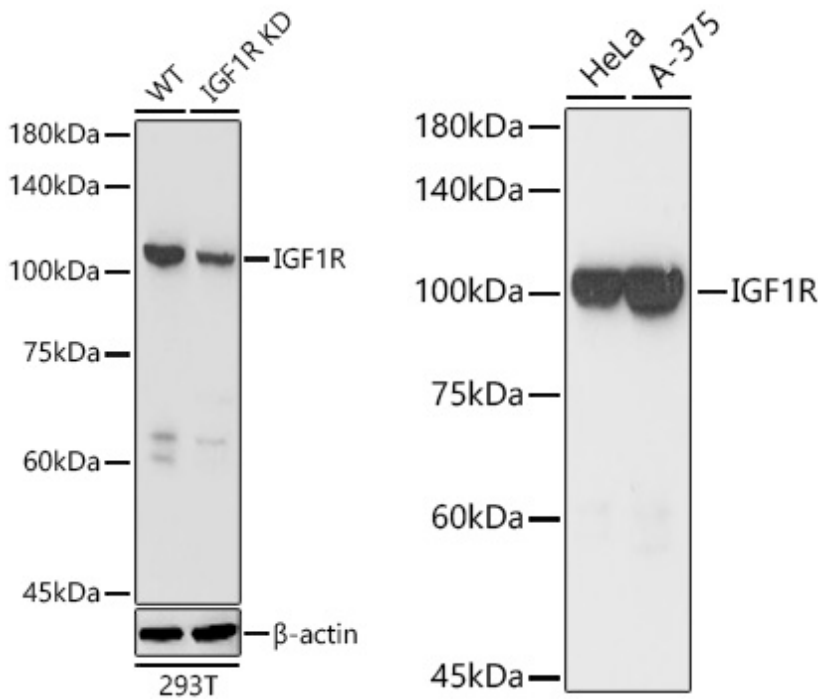


Product name:	IGF1R Rabbit Polyclonal Antibody
Cat number:	AB-81364
Conjugate:	Unconjugated
Size:	100µg
Clone:	POLY
Concentration:	1mg/ml
Host:	Rabbit
Isotype:	IgG
Immunogen:	Recombinant fusion protein containing a sequence corresponding to amino acids 1201-1367 of human IGF1R.
Reactivity:	Human,Mouse,Rat
Applications:	Western Blot: 1:1000 - 1:5000
Molecular Weight:	100kDa
Purification:	Affinity purification
Form:	Liquid
Buffer:	PBS with 0.01% thimerosal,50% glycerol,pH7.3.
Storage:	At 4°C for one month. Or store frozen at -20°C for a longer time. Avoid freezing and thawing.
Background:	This receptor binds insulin-like growth factor with a high affinity. It has tyrosine kinase activity. The insulin-like growth factor I receptor plays a critical role in transformation events. Cleavage of the precursor generates alpha and beta subunits. It is highly overexpressed in most malignant tissues where it functions as an anti-apoptotic agent by enhancing cell survival. Alternatively spliced transcript variants encoding distinct isoforms have been found for this gene.



Western blot analysis of lysates from wild type (WT) and IGF1R knockdown (KD) 293T cells using [KDValidated] IGF1R Rabbit pAb at 1:3000 dilution. Secondary antibody: HRP Goat Anti-Rabbit IgG (H+L) at 1:10000 dilution. Lysates/proteins: 25 µg per lane. Blocking buffer: 3% nonfat dry milk in TBST. Detection: ECL West Pico Plus. Exposure time: 10s.

Western blot analysis of various lysates using [KD Validated] IGF1R Rabbit pAb at 1:3000 dilution. Secondary antibody: HRP Goat Anti-Rabbit IgG (H+L) at 1:10000 dilution. Lysates / proteins: 25 µg per lane. Blocking buffer: 3 % nonfat dry milk in TBST. Detection: ECL West Pico Plus. Exposure time: 10s.