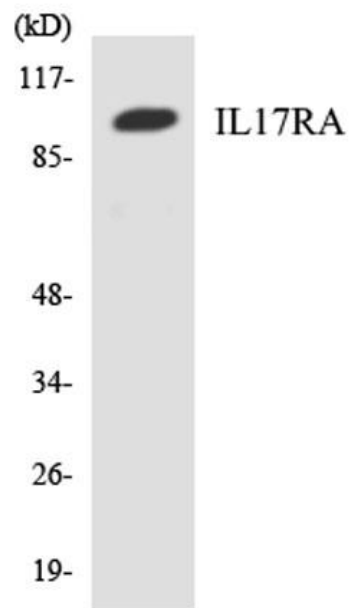

| | |
|--------------------------|---|
| Product name: | IL-17R alpha Rabbit Polyclonal Antibody |
| Cat number: | AB-E9039 |
| Conjugate: | Unconjugated |
| Size: | 100 ug |
| Clone: | POLY |
| Concentration: | 1mg/ml |
| Host: | Rabbit |
| Isotype: | IgG |
| Immunogen: | The antiserum was produced against synthesized peptide derived from human IL17RA. AA |
| Reactivity: | Human;Mouse |
| Applications: | Western Blot: 1/500 - 1/2000 ELISA: 1/40000 |
| Molecular Weight: | 90kD |
| Purification: | The antibody was affinity-purified from rabbit antiserum by affinity-chromatography using epitope-specific immunogen. |
| Form: | Liquid |
| Buffer: | Liquid in PBS containing 50% glycerol, 0.5% BSA and 0.02% sodium azide. |
| Storage: | Store at -20°C. Avoid repeated freeze-thaw cycles. |
| Background: | Interleukin 17A (IL17A) is a proinflammatory cytokine secreted by activated T-lymphocytes. It is a potent inducer of the maturation of CD34-positive hematopoietic precursors into neutrophils. The transmembrane protein encoded by this gene (interleukin 17A receptor; IL17RA) is a ubiquitous type I membrane glycoprotein that binds with low affinity to interleukin 17A. Interleukin 17A and its receptor play a pathogenic role in many inflammatory and autoimmune diseases such as rheumatoid arthritis. Like other cytokine receptors, this receptor likely has a multimeric structure. Alternative splicing results in multiple transcript variants encoding different isoforms |



Western blot analysis of the lysates from HeLa cells using IL17RA antibody.