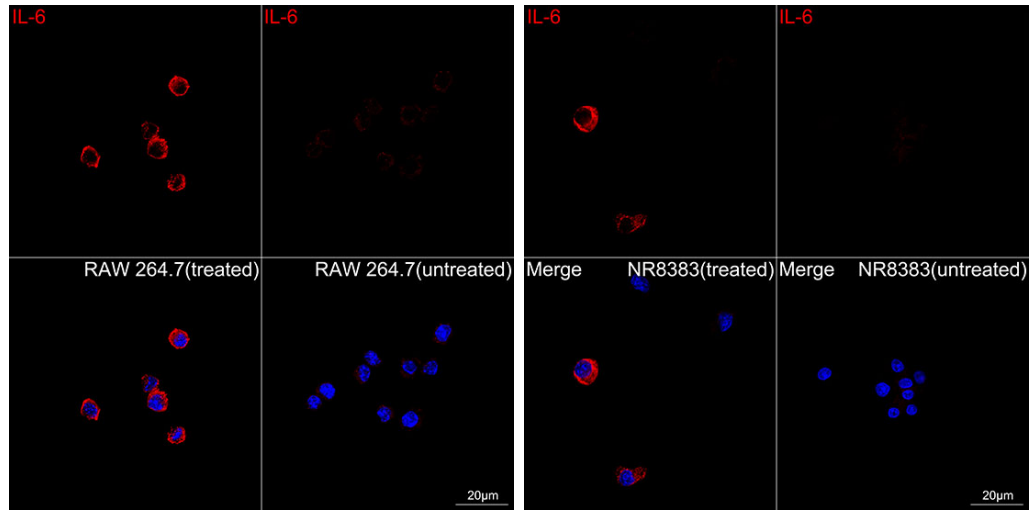
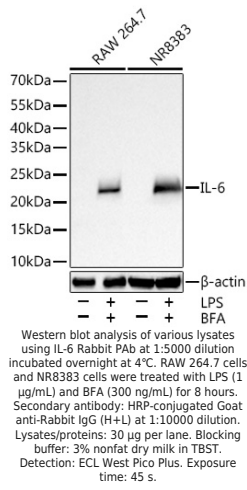

Product name:	IL-6 Rabbit Polyclonal Antibody
Cat number:	ABE4078
Conjugate:	Unconjugated
Size:	100 ug
Concentration:	1mg/ml
Host:	Rabbit
Isotype:	IgG
Immunogen:	Recombinant protein. This information is considered to be commercially sensitive.
Reactivity:	Mouse,Rat
Applications:	WB 1:1000 - 1:5000 IP 0.5 µg-4 µg antibody for 900 µg-1100 µg extracts of whole cells IF/ICC 1:200 - 1:800 ELISA
Molecular Weight:	24 kDa
Purification:	Affinity purification
Form:	liquid
Buffer:	PBS containing 50% glycerol and 0.05% BSA, preserved with proclin300 or sodium azide (as specified on the Certificate of Analysis), pH 7.3.
Storage:	Store at -20°C. Avoid freeze / thaw cycles.
Background:	Enables cytokine activity and interleukin-6 receptor binding activity. Involved in several processes, including cellular response to cytokine stimulus; positive regulation of cell communication; and positive regulation of metabolic process. Located in extracellular space. Used to study several diseases, including acute necrotizing pancreatitis; disseminated intravascular coagulation; hypertension (multiple); impotence; and steatotic liver disease. Biomarker of several diseases, including acute necrotizing pancreatitis; artery disease (multiple); auditory system disease (multiple); gastrointestinal system cancer (multiple); and lung disease (multiple). Human ortholog(s) of this gene implicated in several diseases, including autoimmune disease (multiple); eye disease (multiple); gastrointestinal system cancer (multiple); glucose metabolism disease (multiple); and periodontal disease (multiple). Orthologous to human IL6 (interleukin 6).



Confocal imaging of RAW 264.7 cells (treated with LPS and BFA) and RAW 264.7 cells (untreated) using IL-6 Rabbit PAb (dilution 1:200) followed by a further incubation with Cy3-conjugated Goat Anti-Rabbit IgG (H+L) (AS007, dilution 1:500) (Red). DAPI was used for nuclear staining (Blue). Objective: 100x.

Confocal imaging of NR8383 cells (treated with LPS and BFA) and NR8383 cells (untreated) using IL-6 Rabbit pAb , dilution 1:200) followed by a further incubation with Cy3-conjugated Goat Anti-Rabbit IgG (H+L) (, dilution 1:500) (Red). DAPI was used for nuclear staining (Blue). Objective: 100x.