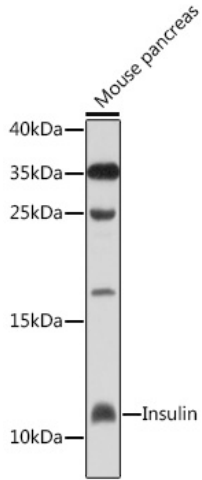
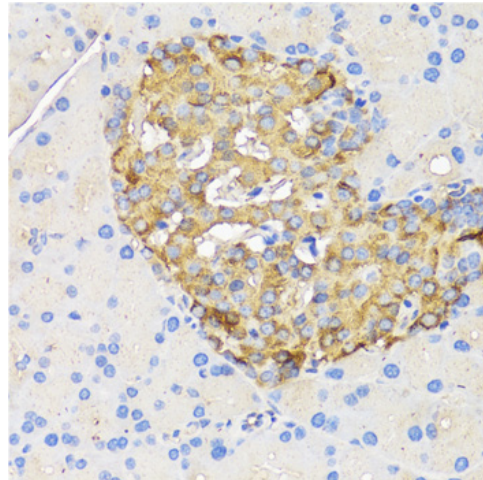
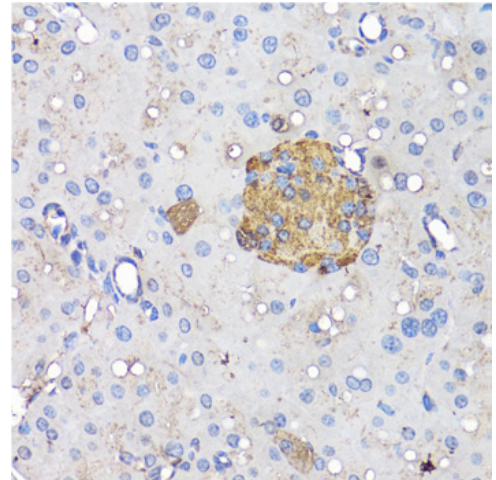

Product name:	Insulin Rabbit Polyclonal Antibody	
Cat number:	AB-84377	
Conjugate:	Unconjugated	
Size:	100 ug	
Clone:	POLY	
Concentration:	1mg/ml	
Host:	Rabbit	
Isotype:	IgG	
Immunogen:	Recombinant fusion protein containing a sequence corresponding to amino acids 1-110 of human INS.	
Reactivity:	Human, Mouse, Rat	
Applications:	Western Blot:	1:500 - 1:2000
	Immunohistochemistry:	1:50 - 1:200
	Immunofluorescence:	1:50 - 1:200
Molecular Weight:	12kDa	
Purification:	Affinity purification	
Form:	Liquid	
Buffer:	PBS with 0.02% sodium azide,50% glycerol,pH7.3.	
Storage:	Store at -20°C. Avoid freeze / thaw cycles.	
Background:	After removal of the precursor signal peptide, proinsulin is post-translationally cleaved into three peptides: the B chain and A chain peptides, which are covalently linked via two disulfide bonds to form insulin, and C-peptide. Binding of insulin to the insulin receptor (INSR) stimulates glucose uptake. A multitude of mutant alleles with phenotypic effects have been identified. There is a read-through gene, INS-IGF2, which overlaps with this gene at the 5' region and with the IGF2 gene at the 3' region. Alternative splicing results in multiple transcript variants.	



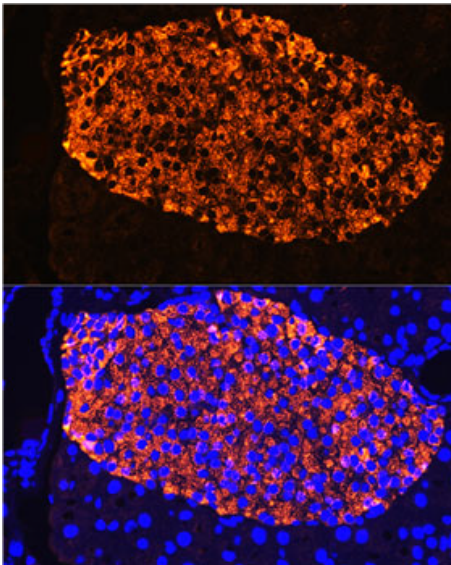
Western blot analysis of extracts of mouse pancreas, using Insulin antibody at 1:1000 dilution.
Secondary antibody: HRP Goat Anti-Rabbit IgG (H+L) at 1:10000 dilution. Lysates/protein/Insulin: 25ug per lane. Blocking buffer: 3% nonfat dry milk in TBST.
Detection: ECL West Pico Plus.
Exposure time: 30s.



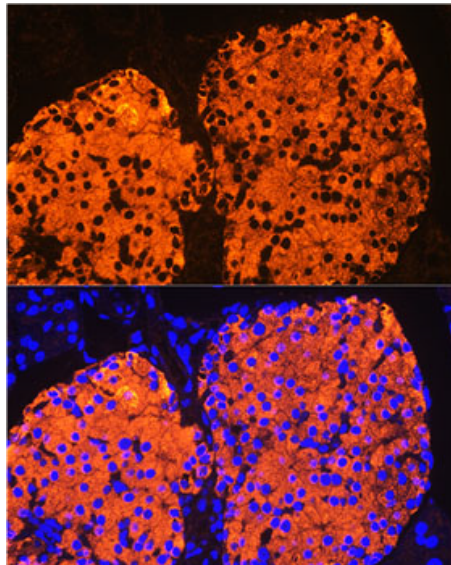
Immunohistochemistry of paraffin embedded rat pancreatic islet using Insulin antibody at dilution of 1:50 (40x lens).



Immunohistochemistry of paraffin embedded mouse pancreatic islet using Insulin antibody at dilution of 1:50 (40x lens).



Immunofluorescence analysis of Rat pancreas using Insulin Rabbit pAb at dilution of 1:100.
Blue: DAPI for nuclear staining.



Immunofluorescence analysis of Mouse pancreatic islet using Insulin Rabbit pAb at dilution of 1:100. Blue: DAPI for nuclear staining.