

Product name: Insulin Receptor Substrate 1

Cat number: AB-83501

Conjugate: Unconjugated

Size: 100 ug

Clone: POLY

Concentration: 1mg/ml

Host: Rb

Isotype: IgG

Immunogen: The antiserum was produced against synthesized peptide derived from human IRS-1 AA range 603-652

Reactivity: Hu, Ms,Rt

Applications: WB 1:500 - 1:1000. IHC: 1:100-100 IF 1:100-200

Molecular Weight: 170KD

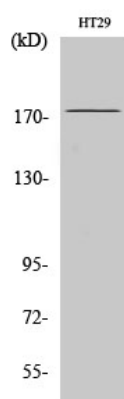
Purification: Aff. Pur.

Form: Liquid

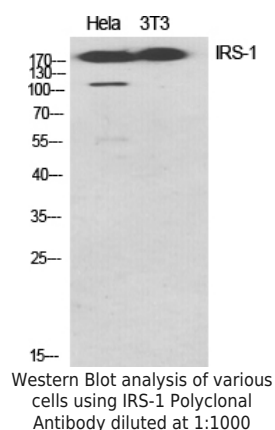
Buffer: PBS containing 50% glycerol, 0.5% BSA and 0.02% sodium azide

Storage: Store at -20°C. Avoid repeated freeze-thaw cycles.

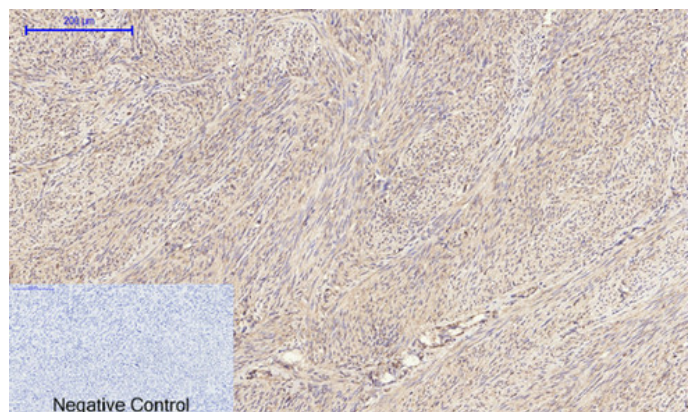
Background: This gene encodes a protein which is phosphorylated by insulin receptor tyrosine kinase. Mutations in this gene are associated with type II diabetes and susceptibility to insulin resistance.



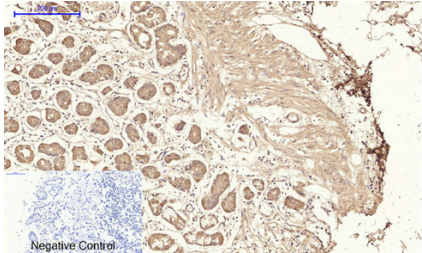
Western Blot analysis of HT29 cells using IRS-1 Polyclonal Antibody diluted at 1:1000



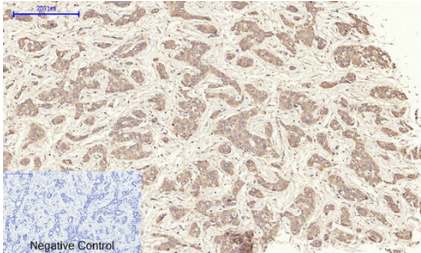
Western Blot analysis of various cells using IRS-1 Polyclonal Antibody diluted at 1:1000



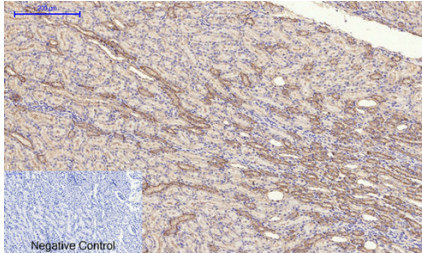
Immunohistochemical analysis of paraffin-embedded Human-uterus tissue. 1,IRS-1 Polyclonal Antibody was diluted at 1:200(4°C,overnight). 2, Sodium citrate pH 6.0 was used for antibody retrieval(>98°C,20min). 3,Secondary antibody was diluted at 1:200(room temperature, 30min). Negative control was used by secondary antibody only



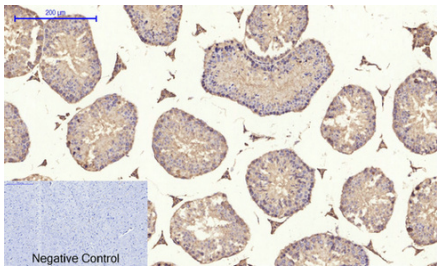
Negative Control
Immunohistochemical analysis of paraffin-embedded Human-stomach tissue. 1,IRS-1 Polyclonal Antibody was diluted at 1:200(4°C,overnight). 2, Sodium citrate pH 6.0 was used for antibody retrieval(>98°C,20min). 3,Secondary antibody was diluted at 1:200(room temperature, 30min). Negative control was used by secondary antibody only



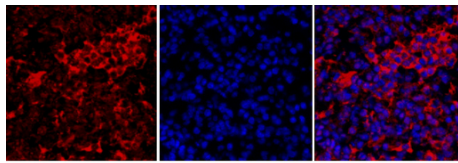
Negative Control
Immunohistochemical analysis of paraffin-embedded Human-liver-cancer tissue. 1,IRS-1 Polyclonal Antibody was diluted at 1:200(4°C,overnight). 2, Sodium citrate pH 6.0 was used for antibody retrieval(>98°C,20min). 3,Secondary antibody was diluted at 1:200(room temperature, 30min). Negative control was used by secondary antibody only



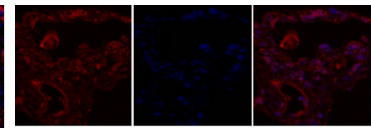
Negative Control
Immunohistochemical analysis of paraffin-embedded Rat-kidney tissue. 1,IRS-1 Polyclonal Antibody was diluted at 1:200(4°C,overnight). 2, Sodium citrate pH 6.0 was used for antibody retrieval(>98°C,20min). 3,Secondary antibody was diluted at 1:200(room temperature, 30min). Negative control was used by secondary antibody only



Negative Control
Immunohistochemical analysis of paraffin-embedded Mouse-brain tissue. 1,IRS-1 Polyclonal Antibody was diluted at 1:200(4°C,overnight). 2, Sodium citrate pH 6.0 was used for antibody retrieval(>98°C,20min). 3,Secondary antibody was diluted at 1:200(room temperature, 30min). Negative control was used by secondary antibody only



A B C
Immunofluorescence analysis of mouse-lung tissue. 1,IRS-1 Polyclonal Antibody(red) was diluted at 1:200(4°C,overnight). 2, Cy3 labeled Secondary antibody was diluted at 1:300(room temperature, 50min). 3, Picture B: DAPI(blue) 10min. Picture A:Target. Picture B: DAPI. Picture C: merge of A+B



A B C
Immunofluorescence analysis of human-lung tissue. 1,IRS-1 Polyclonal Antibody(red) was diluted at 1:200(4°C,overnight). 2, Cy3 labeled Secondary antibody was diluted at 1:300(room temperature, 50min). 3, Picture B: DAPI(blue) 10min. Picture A:Target. Picture B:dapi C: merge A