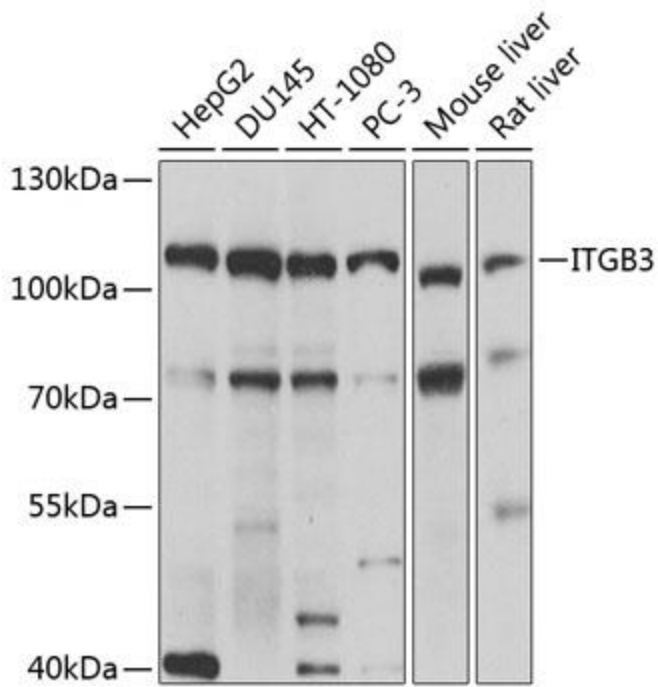


---

<b>Product name:</b>	Integrin b3 / CD61
<b>Cat number:</b>	AB-81992
<b>Conjugate:</b>	Unconjugated
<b>Size:</b>	100µg
<b>Clone:</b>	POLY
<b>Concentration:</b>	1mg/ml
<b>Host:</b>	Rb
<b>Isotype:</b>	IgG
<b>Immunogen:</b>	Recombinant fusion protein containing a sequence corresponding to amino acids 609-788 of human ITGB3
<b>Reactivity:</b>	Hu, Ms, Rt
<b>Applications:</b>	Western Blot: 1:1000
<b>Molecular Weight:</b>	112kDa
<b>Purification:</b>	Aff. Pur.
<b>Form:</b>	Liquid
<b>Buffer:</b>	PBS with 0.02% sodium azide,0.05% BSA,50% glycerol, pH7.3
<b>Storage:</b>	Store at -20°C. Avoid freeze / thaw cycles.
<b>Background:</b>	The ITGB3 protein product is the integrin beta chain beta 3. Integrins are integral cell surface proteins composed of an alpha chain and a beta chain. A given chain may combine with multiple partners resulting in different integrins. Integrin beta 3 is found along with the alpha IIb chain in platelets. Integrins are known to participate in cell adhesion as well as cell-surface mediated signaling.



Western blot analysis of extracts of various cell lines, using ITGB3 antibody at 1:1000 dilution. Secondary antibody: HRP Goat Anti-Rabbit IgG (H+L) at 1:10000 dilution. Lysates/proteins: 25ug per lane. Blocking buffer: 3% nonfat dry milk in TBST. Detection: ECL West Pico Plus. Exposure time: 10s.