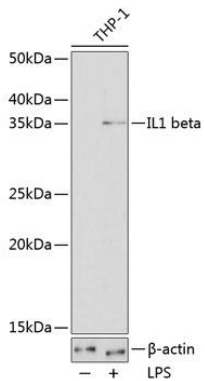
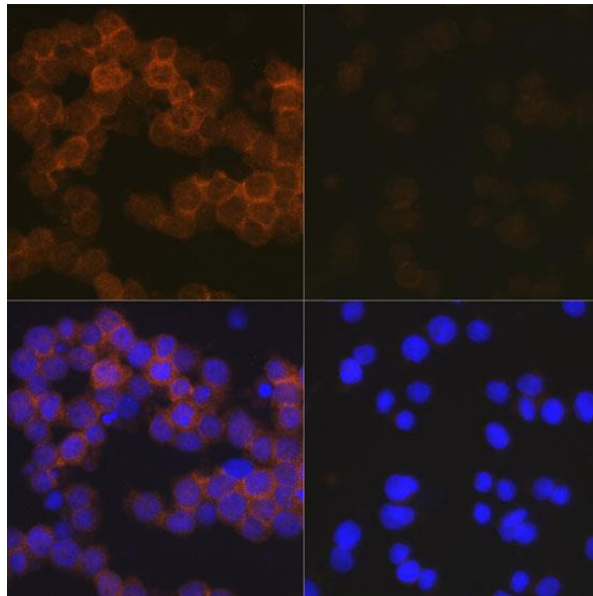
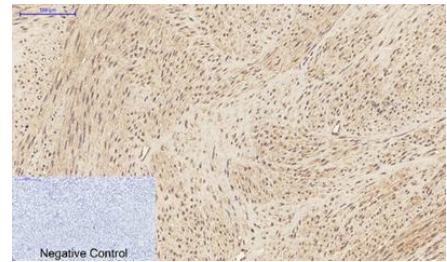

Product name:	Interleukin-1 Beta Rabbit Monoclonal Antibody
Cat number:	MAB-94634
Conjugate:	Unconjugated
Size:	100 ug
Clone:	MI1
Concentration:	1mg/ml
Host:	Rabbit
Isotype:	IgG
Immunogen:	The antiserum was produced against synthesized peptide derived from the Internal region of human IL1B. AA range:181-230
Reactivity:	Human, Mouse, Rat
Applications:	Western Blot: 1:500 - 1:2000 Immunofluorescence: 1:50 - 1:200 Immunohistochemistry (paraffin-embedded tissues) 1:100-300
Molecular Weight:	17kDa
Purification:	The antibody was affinity-purified from rabbit antiserum by affinity-chromatography using epitope-specific immunogen.
Form:	Liquid
Buffer:	Liquid in PBS containing 50% glycerol, 0.5% BSA and 0.02% sodium azide.
Storage:	Store at -20°C. Avoid freeze / thaw cycles.
Background:	The protein encoded by this gene is a member of the interleukin 1 cytokine family. This cytokine is produced by activated macrophages as a proprotein, which is proteolytically processed to its active form by caspase 1 (CASP1/ICE). This cytokine is an important mediator of the inflammatory response, and is involved in a variety of cellular activities, including cell proliferation, differentiation, and apoptosis. The induction of cyclooxygenase-2 (PTGS2/COX2) by this cytokine in the central nervous system (CNS) is found to contribute to inflammatory pain hypersensitivity. This gene and eight other interleukin 1 family genes form a cytokine gene cluster on chromosome 2.



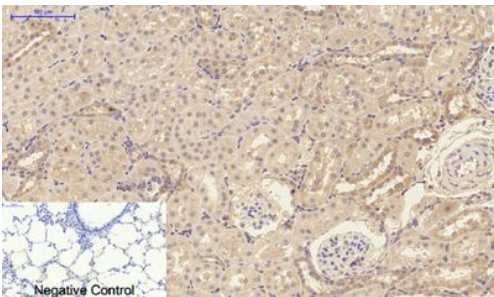
Western blot analysis of extracts of THP-1 cells, using IL1 beta antibody at 1:1000 dilution. THP-1 cells were treated by LPS (1 µg/mL) at 37°C for 8 hours. Secondary antibody: HRP Goat Anti-Rabbit IgG (H+L) at 1:10000 dilution. Lysates/proteins: 25 µg per lane. Blocking buffer: 3% nonfat dry milk in TBST. Detection: ECL West Pico Plus. Exposure time: 3min.



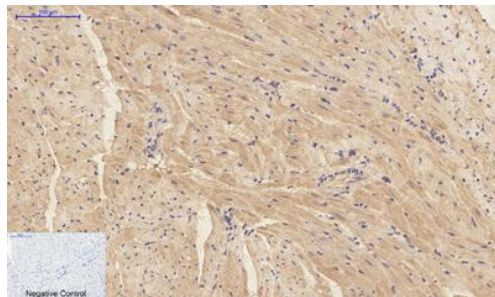
Immunofluorescence analysis of THP-1 cells using IL1 beta antibody. (THP-1 cells were treated by LPS (1 µg/mL) at 37°C for 8 hours. Blue: DAPI for nuclear staining.



Immunohistochemical analysis of paraffin-embedded Human-uterus tissue. 1, IL-1β Polyclonal Antibody was diluted at 1:200 (4°C, overnight). 2, Sodium citrate pH 6.0 was used for antibody retrieval (>98°C, 20min). 3, Secondary antibody was diluted at 1:200 (room temperature, 30min). Negative control was used by secondary antibody only.



Immunohistochemical analysis of paraffin-embedded Rat-lung tissue. 1, IL-1β Polyclonal Antibody was diluted at 1:200 (4°C, overnight). 2, Sodium citrate pH 6.0 was used for antibody retrieval (>98°C, 20min). 3, Secondary antibody was diluted at 1:200 (room temperature).



Immunohistochemical analysis of paraffin-embedded Mouse-heart tissue. 1, IL-1β Polyclonal Antibody was diluted at 1:200 (4°C, overnight). 2, Sodium citrate pH 6.0 was used for antibody retrieval (>98°C, 20min). 3, Secondary antibody was diluted at 1:200 (room temperature, 30min). Negative control was used by secondary antibody only.