

Product name: IP3R-I (phospho Ser1598) rabbit Polyclonal Antibody

Cat number: ABE5964

Conjugate: unconjugated

Size: 100 ug

Clone: Polyclonal

Concentration: 1 mg/ml

Host: Rabbit

Isotype: IgG

Immunogen: The antiserum was produced against synthesized peptide derived from human Inositol 1,4,5-trisphosphate R1 around the phosphorylation site of Ser1598/1588. AA range:1566-1615

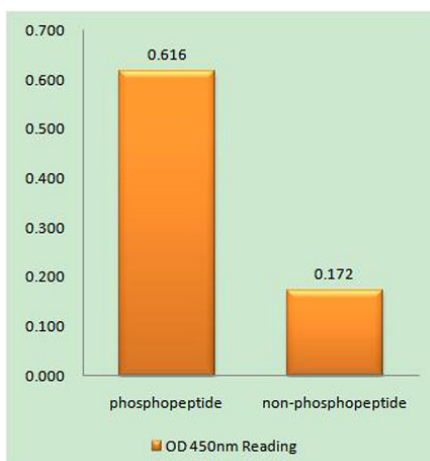
Reactivity: Human;Mouse;Rat

Applications: Immunohistochemistry: 1/100 - 1/300. Immunofluorescence: 1/200 - 1/1000. ELISA: 1/10000. Not yet tested in other applications.

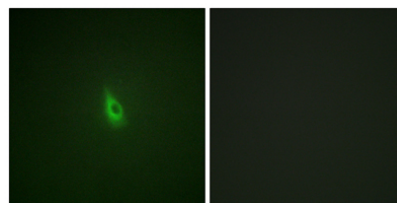
Form: liquid

Storage: -20°C/1 year

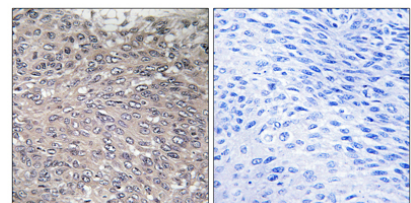
Background: This gene encodes an intracellular receptor for inositol 1,4,5-trisphosphate. Upon stimulation by inositol 1,4,5-trisphosphate, this receptor mediates calcium release from the endoplasmic reticulum. Mutations in this gene cause spinocerebellar ataxia type 15, a disease associated with an heterogeneous group of cerebellar disorders. Multiple transcript variants have been identified for this gene. [provided by RefSeq, Nov 2009],



Enzyme-Linked Immunosorbent Assay (Phospho-ELISA) for Immunogen Phosphopeptide (Phospho-left) and Non-Phosphopeptide (Phospho-right), using Inositol 1,4,5-trisphosphate R1 (Phospho-Ser1598/1588) Antibody



Immunofluorescence analysis of A549 cells, using Inositol 1, 4, 5-trisphosphate R1 (Phospho-Ser1598/1588) Antibody. The picture on the right is blocked with the phospho peptide.



Immunohistochemistry analysis of paraffin-embedded human cervix carcinoma, using Inositol 1, 4, 5-trisphosphate R1 (Phospho-Ser1598/1588) Antibody. The picture on the right is blocked with the phospho peptide.