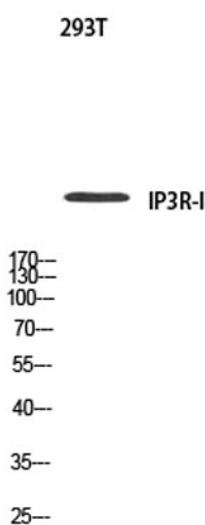
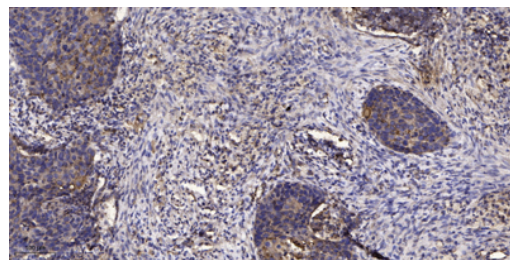


<b>Product name:</b>	IP3R-I rabbit Polyclonal Antibody
<b>Cat number:</b>	ABE8348
<b>Conjugate:</b>	unconjugated
<b>Size:</b>	100 ug
<b>Clone:</b>	Polyclonal
<b>Concentration:</b>	1 mg/ml
<b>Host:</b>	Rabbit
<b>Isotype:</b>	IgG
<b>Immunogen:</b>	Synthesized peptide derived from IP3R-I . at AA range: 1700-1780
<b>Reactivity:</b>	Human;Mouse;Rat
<b>Applications:</b>	WB 1:500-2000;IHC-p 1:50-300
<b>Molecular Weight:</b>	320kD
<b>Form:</b>	liquid
<b>Storage:</b>	-20°C/1 year
<b>Background:</b>	This gene encodes an intracellular receptor for inositol 1,4,5-trisphosphate. Upon stimulation by inositol 1,4,5-trisphosphate, this receptor mediates calcium release from the endoplasmic reticulum. Mutations in this gene cause spinocerebellar ataxia type 15, a disease associated with an heterogeneous group of cerebellar disorders. Multiple transcript variants have been identified for this gene. [provided by RefSeq, Nov 2009],



Western blot analysis of 293T using IP3R-I antibody. Antibody was diluted at 1:500. Secondary antibody was diluted at 1:20000



Immunohistochemical analysis of paraffin-embedded human Squamous cell carcinoma of lung. 1, Antibody was diluted at 1:200(4° overnight). 2, Tris-EDTA,pH9.0 was used for antigen retrieval. 3,Secondary antibody was diluted at 1:200(room temperature, 45min).