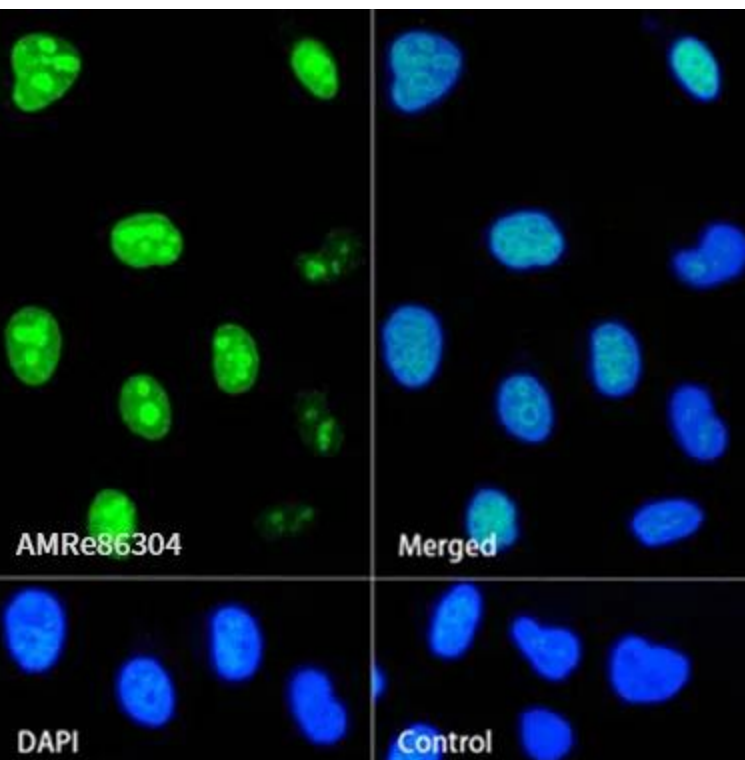


---

<b>Product name:</b>	Ki67 Rabbit Monoclonal Antibody
<b>Cat number:</b>	MABN86304
<b>Conjugate:</b>	Unconjugated
<b>Size:</b>	100µL
<b>Concentration:</b>	1mg/ml
<b>Host:</b>	Rabbit
<b>Isotype:</b>	IgG
<b>Immunogen:</b>	A synthetic peptide of human Ki67
<b>Reactivity:</b>	Human, Mouse, Rat
<b>Applications:</b>	WB 1:1000-1:10000,IHC 1:200-1:1000,ICC/IF 1:200-1:1000,FC 1:1000-1:10000
<b>Molecular Weight:</b>	359 kDa
<b>Purification:</b>	Affinity purification
<b>Form:</b>	liquid
<b>Buffer:</b>	Supplied in 50mM Tris-Glycine(pH 7.4), 0.15M NaCl, 40% Glycerol, 0.01% sodium azide and 0.05% protective protein. Stable for 12 months from date of receipt.
<b>Storage:</b>	Store at 4°C short term. Aliquot and store at -20°C long term. Avoid freeze/thaw cycles.
<b>Background:</b>	This gene encodes a nuclear protein that is associated with and may be necessary for cellular proliferation. Alternatively spliced transcript variants have been described. A related pseudogene exists on chromosome X. [provided by RefSeq, Mar 2009]



Immunofluorescence analysis of HeLa cells labelling Ki67 with Ki67 Rabbit Monoclonal Antibody.