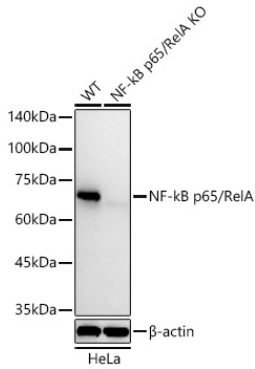
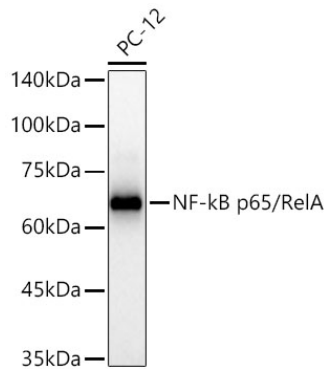
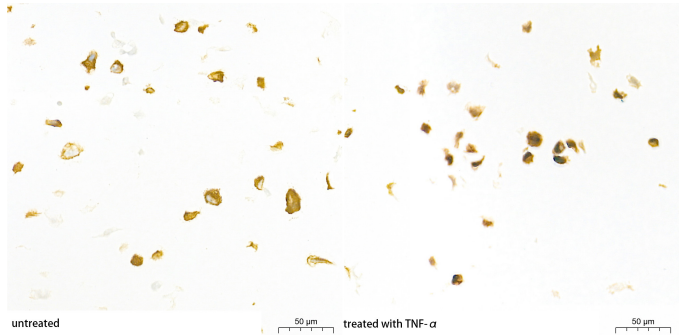

Product name:	[KO Validated] NF-kB p65/RelA Rabbit Monoclonal Antibody
Cat number:	MAB-94597
Conjugate:	Unconjugated
Size:	100 ug
Clone:	ARC51086
Concentration:	1mg/ml
Host:	Rabbit
Isotype:	IgG
Immunogen:	Synthetic peptide. This information is considered to be commercially sensitive.
Reactivity:	Human,Mouse,Rat,Monkey
Applications:	WB 1:5000 - 1:20000 IHC-P 1:2000 - 1:8000 IF/ICC 1:600 - 1:2400 ChIP 5µg antibody for 10µg-15µg of Chromatin ELISA Recommended starting concentration is 1 µg/mL. Please optimize the concentration based on your specific assay requirements.
Molecular Weight:	65kDa
Purification:	Affinity purification
Form:	liquid
Buffer:	PBS with 0.09% Sodium azide,0.05% BSA,50% glycerol,pH7.3.
Storage:	Store at -20°C. Avoid freeze / thaw cycles.
Background:	NF-kappa-B is a ubiquitous transcription factor involved in several biological processes. It is held in the cytoplasm in an inactive state by specific inhibitors. Upon degradation of the inhibitor, NF-kappa-B moves to the nucleus and activates transcription of specific genes. NF-kappa-B is composed of NFKB1 or NFKB2 bound to either REL, RELA, or RELB. The most abundant form of NF-kappa-B is NFKB1 complexed with the product of this gene, RELA. Four transcript variants encoding different isoforms have been found for this gene.



Western blot analysis of lysates from wild type (WT) and NF- κ B p65/RelA knockout (KO) HeLa cells using [KO Validated] NF- κ B p65/RelA Rabbit mAb at 1:10000 dilution incubated overnight at 4°C. Secondary antibody: HRP-conjugated Goat anti-Rabbit IgG (H+L) at 1:10000 dilution. Lysates/proteins: 25 μ g per lane. Blocking buffer: 3% nonfat dry milk in TBST. Detection: ECL West Pico Plus. Exposure time: 30s.



Western blot analysis of lysates from PC-12 cells using [KO Validated] NF- κ B p65/RelA Rabbit mAb at 1:10000 dilution incubated overnight at 4°C. Secondary antibody: HRP-conjugated Goat anti-Rabbit IgG (H+L) at 1:10000 dilution. Lysates/proteins: 25 μ g per lane. Blocking buffer: 3% nonfat dry milk in TBST. Detection: ECL West Pico Plus. Exposure time: 30s.



Immunohistochemistry analysis of paraffin-embedded HT-1080 cell lines (untreated and treated with TNF- α) using [KO Validated] NF- κ B p65/RelA Rabbit mAb at a dilution of 1:3000 (40x lens). High pressure antigen retrieval performed with 0.01M Tris-EDTA Buffer (pH 9.0) prior to IHC staining.