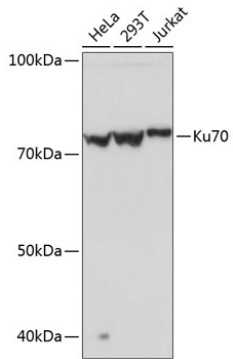
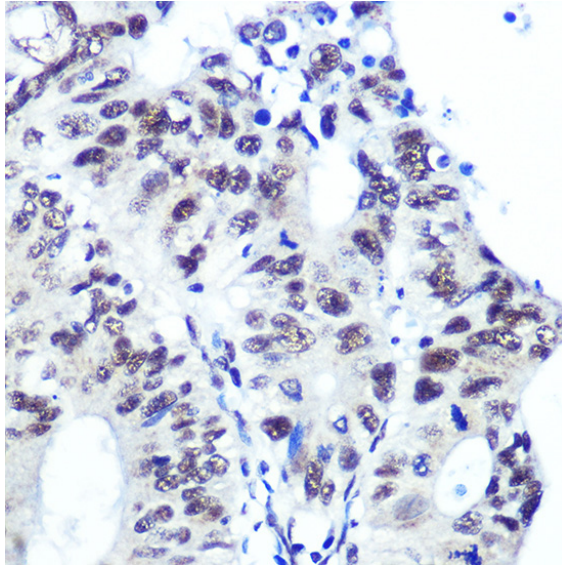


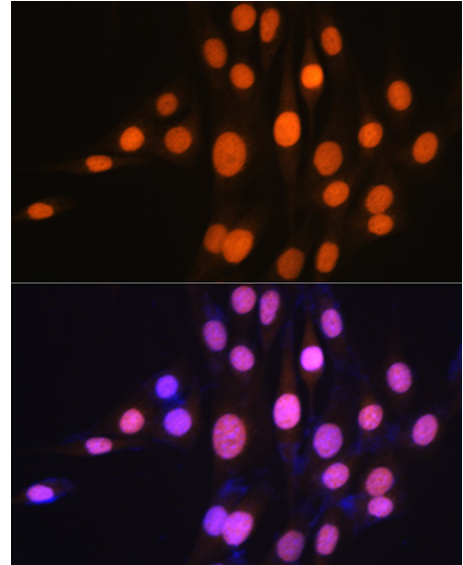
<b>Product name:</b>	KU70 Monoclonal Antibody
<b>Cat number:</b>	MAB-94696
<b>Conjugate:</b>	Unconjugated
<b>Size:</b>	100 ug
<b>Clone:</b>	EPR4027
<b>Concentration:</b>	1mg/ml
<b>Host:</b>	Rb
<b>Isotype:</b>	IgG
<b>Immunogen:</b>	Immunogen A synthetic peptide corresponding to a sequence within amino acids 500-609 of human Ku70.
<b>Reactivity:</b>	Human, Mouse, Rat
<b>Applications:</b>	Western Blot: 1:500 - 1:2000 Immunohistochemistry: HC 1:50 - 1:200 Immunofluorescence: 1:50 - 1:200 Immunocytochemistry CC 1:50 - 1:200
<b>Molecular Weight:</b>	70KDa
<b>Purification:</b>	Aff. Pur.
<b>Form:</b>	Liquid
<b>Buffer:</b>	PBS with 0.01% thiomersal,0.05% BSA,50% glycerol,pH7.3.
<b>Storage:</b>	Store at -20°C. Avoid freeze / thaw cycles.
<b>Background:</b>	The p70/p80 autoantigen is a nuclear complex consisting of two subunits with molecular masses of approximately 70 and 80 kDa. The complex functions as a single-stranded DNA-dependent ATP-dependent helicase. The complex may be involved in the repair of nonhomologous DNA ends such as that required for double-strand break repair, transposition, and V(D)J recombination. High levels of autoantibodies to p70 and p80 have been found in some patients with systemic lupus erythematosus.



Western blot analysis of extracts of various cell lines, using Ku70 Rabbit mAb at 1:1000 dilution. Secondary antibody: HRP Goat Anti-Rabbit IgG (H+L) at 1:10000 dilution. Lysates/proteins: 25ug per lane. Blocking buffer: 3% nonfat dry milk in TBST. Detection: ECL West Pico Plus. Exposure time: 1s.



Immunofluorescence analysis of NIH-3T3 cells using Ku70 Rabbit mAb at dilution of 1:100 (40x lens). Blue: DAPI for nuclear staining.



Immunofluorescence analysis of NIH-3T3 cells using Ku70 Rabbit mAb at dilution of 1:100 (40x lens). Blue: DAPI for nuclear staining.