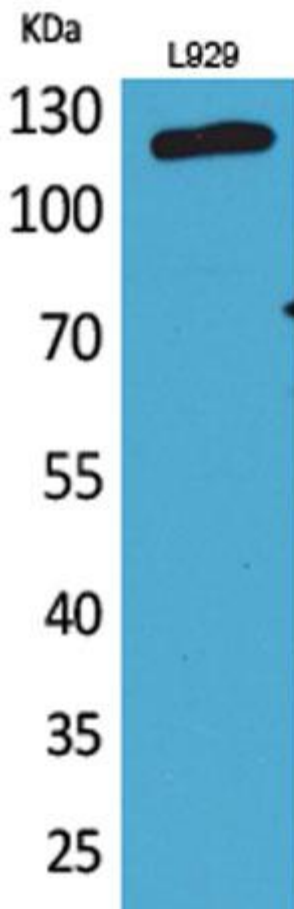
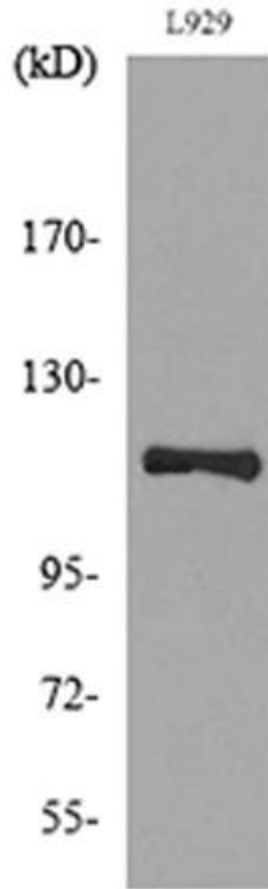


Product name:	LAMP1 / CD107a Rabbit Polyclonal Antibody
Cat number:	AB-81337
Conjugate:	Unconjugated
Size:	100 µg
Clone:	POLY
Concentration:	1mg/ml
Host:	Rabbit
Isotype:	IgG
Immunogen:	The antiserum was produced against synthesized peptide derived from the Internal region of human LAMP1. AA range:211-260
Reactivity:	Human, Mouse, Rat
Applications:	Western Blot: 1/500 - 1/2000
Molecular Weight:	120kDa
Purification:	The antibody was affinity-purified from rabbit antiserum by affinity-chromatography using epitope-specific immunogen.
Form:	Liquid
Buffer:	Liquid in PBS containing 50% glycerol, 0.5% BSA and 0.02% sodium azide.
Storage:	Store at -20°C. Avoid repeated freeze-thaw cycles.
Background:	The protein encoded by this gene is a member of a family of membrane glycoproteins. This glycoprotein provides selectins with carbohydrate ligands. It may also play a role in tumor cell metastasis.



Western Blot analysis of L929 cells using CD107a Polyclonal Antibody. Secondary antibody was diluted at 1:20000s.



Western blot analysis of lysate from L929 cells, using LAMP1 Antibody.