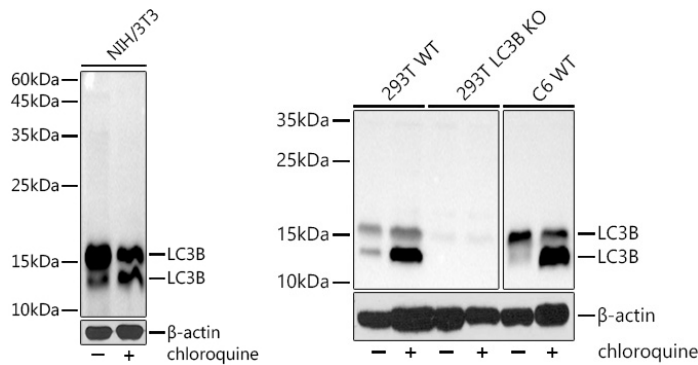
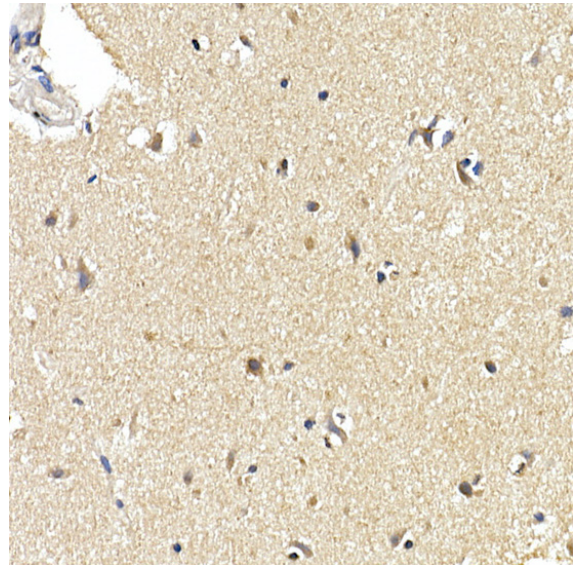

Product name:	LC3B Polyclonal Antibody
Cat number:	AB-84447
Conjugate:	Unconjugated
Size:	100 ug
Clone:	POLY
Concentration:	1mg/ml
Host:	Rb
Isotype:	IgG
Immunogen:	Recombinant fusion protein containing a sequence corresponding to amino acids 2-107 of human LC3B.
Reactivity:	Human, Mouse, Rat
Applications:	Western Blot: 1:500 - 1:2000 Immunohistochemistry: 1:50 - 1:200 Immunofluorescence / Immunocytochemistry: 1:50 - 1:200 Immunoprecipitation: 1:50 - 1:200
Molecular Weight:	14KDa/16KDa
Purification:	Aff. Pur.
Form:	Liquid
Buffer:	PBS with 0.05% proclin300,0.05% BSA,50% glycerol,pH7.3.
Storage:	Store at -20°C. Avoid freeze / thaw cycles.
Background:	The product of this gene is a subunit of neuronal microtubule-associated MAP1A andMAP1B proteins, which are involved in microtubule assembly and important for neurogenesis. Studies on the rat homolog implicate a role for this gene in autophagy, a process that involves the bulk degradation of cytoplasmic component.

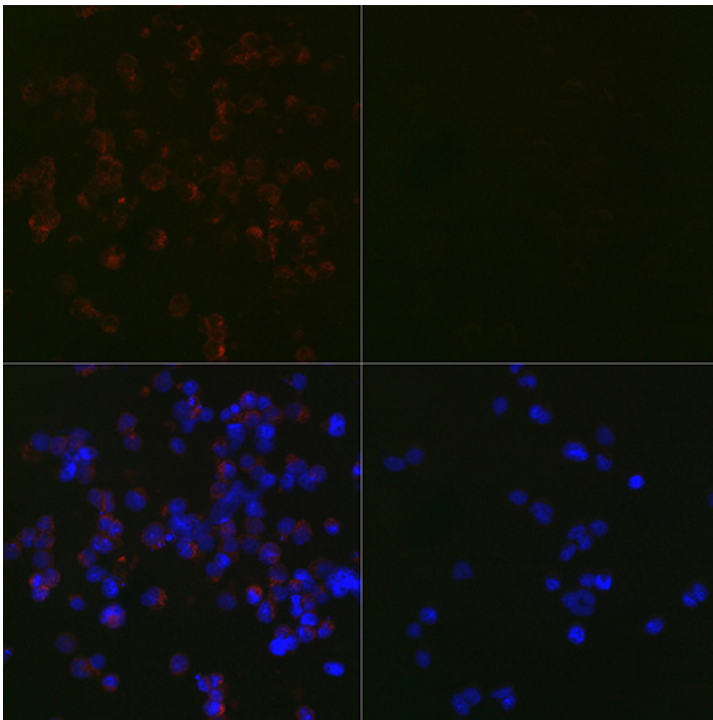


Western blot analysis of extracts of NIH/3T3 cells, using LC3B antibody at 1:1000 dilution. NIH/3T3 cells were treated by Chloroquine (50 μM) at 37°C for 20 hours. Secondary antibody: HRP Goat Anti-Rabbit IgG (H+L) at 1:10000 dilution. Lysates/proteins: 25ug per lane. Blocking buffer: 3% nonfat dry milk in TBST. Detection: ECL West Pico Plus. Exposure time: 60s.

Western blot analysis of extracts from wild type (WT) and [KO Validated] LC3B Rabbit mAb knockout (KO) 293T cells, using [KO Validated] LC3B Rabbit mAb at 1:1000 dilution. 293T and C6 cells were treated by Chloroquine (50 μM) at 37°C for 20 hours. Secondary antibody: HRP Goat Anti-Rabbit IgG (H+L) (AS014) at 1:10000 dilution. Lysates/proteins: 25ug per lane. Blocking buffer: 3% nonfat dry milk in TBST. Detection: ECL Basic Kit (RM00020). Exposure time: 30s.



Immunohistochemistry of paraffinembedded human brain using [KO Validated] LC3B Rabbit mAb at dilution of 1:100(40x ens). Perform high pressure antigen retrieval with 10 mM citrate buffer pH 6.0 before commencing with IHC staining protocol.



Immunofluorescence analysis of 293T Treated with Chloroquine and 293T cells using [KO Validated] LC3B Rabbit mAb at dilution of 1:100 (40x lens). Blue: DAPI for nuclear staining.