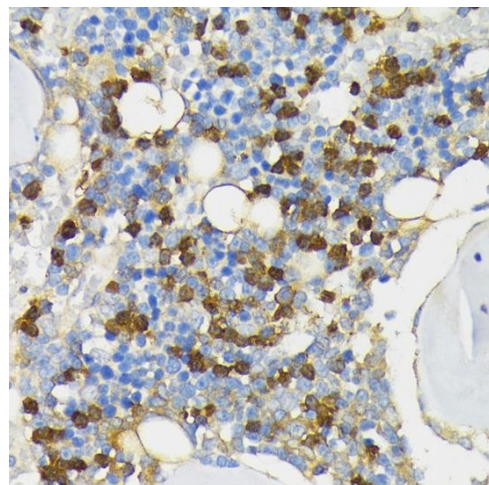
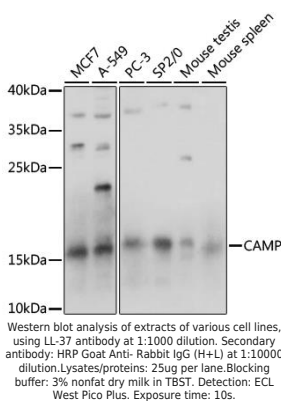
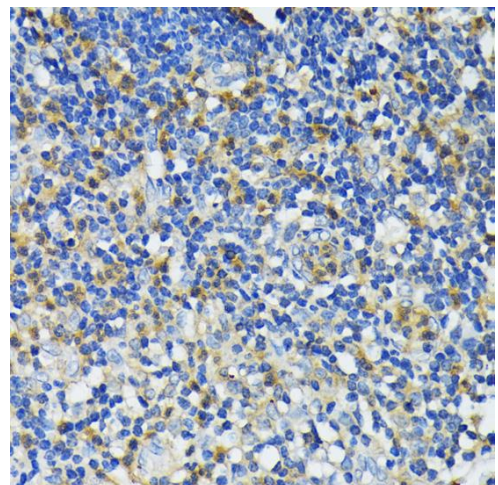


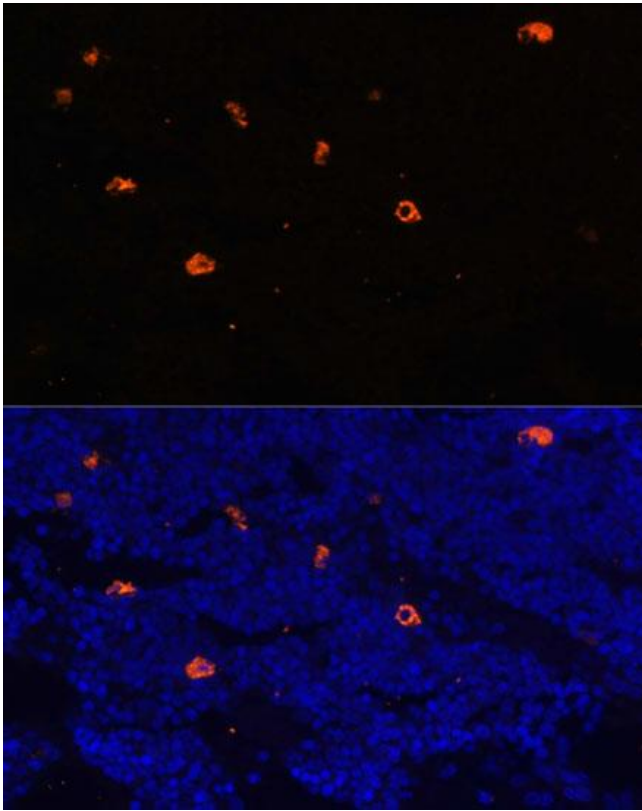
Product name:	LL-37
Cat number:	AB-84264
Size:	100 ug
Clone:	POLY
Concentration:	1mg/ml
Host:	Rb
Isotype:	IgG
Immunogen:	Recombinant fusion protein containing a sequence corresponding to amino acids 31-170 of human CAMP
Reactivity:	Hu, Ms,Rt
Applications:	Western Blot: 1:500 - 1:2000 Immunohistochemistry: 1:50 - 1:200 Immunofluorescence: 1:50 - 1:200
Molecular Weight:	15kDa
Purification:	Aff. Pur.
Form:	Liquid
Buffer:	PBS with 0.02% sodium azide,50% glycerol,pH7.3.
Storage:	Store at -20°C. Avoid freeze / thaw cycles.
Background:	This gene encodes a member of an antimicrobial peptide family, characterized by a highly conserved N-terminal signal peptide containing a cathelin domain and a structurally variable cationic antimicrobial peptide, which is produced by extracellular proteolysis from the C-terminus. In addition to its antibacterial, antifungal, and antiviral activities, the encoded protein functions in cell chemotaxis, immune mediator induction, and inflammatory response regulation.



Immunohistochemistry of paraffin embedded rat bone marrow using LL-37 antibody at dilution of 1:200 (40x lens).



Immunohistochemistry of paraffin embedded human appendix using LL-37 antibody at dilution of 1:200 (40x lens).



Immunofluorescence analysis of rat bone marrow using LL-37 antibody at dilution of 1:100. Blue: DAPI for nuclear staining.