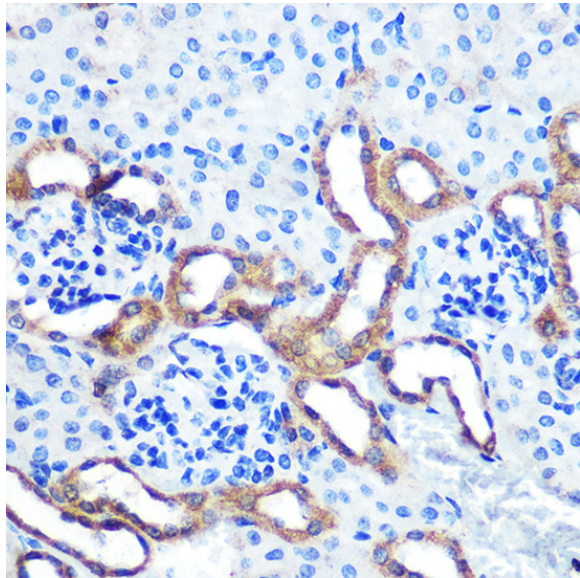
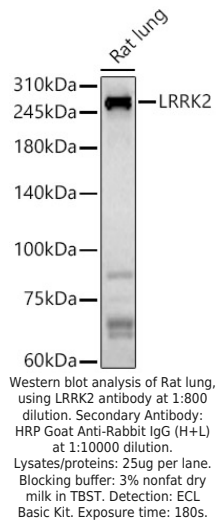
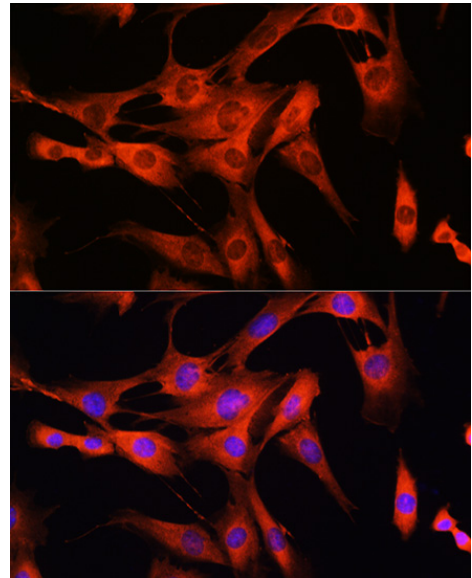

Product name:	LRRK2
Cat number:	AB-82808
Size:	100 ug
Clone:	POLY
Concentration:	1mg/ml
Host:	Rabbit
Isotype:	IgG
Immunogen:	Recombinant fusion protein containing a sequence corresponding to amino acids 750-910 of human LRRK2
Reactivity:	Hu, Ms, Rt
Applications:	WB 1:500 - 1:1000 IHC 1:50 - 1:200 IF 1:50 - 1:200 ICC 1:50 - 1:200
Molecular Weight:	290 kDa
Purification:	Aff. Pur.
Form:	Liquid
Buffer:	PBS with 0.01% thiomersal, 50% glycerol, pH7.3.
Storage:	Store at -20°C. Avoid freeze / thaw cycles
Background:	This gene is a member of the leucine-rich repeat kinase family and encodes a protein with an ankryin repeat region, a leucine-rich repeat (LRR) domain, a kinase domain, a DFG-like motif, a RAS domain, a GTPase domain, a MLK-like domain, and a WD40 domain. The protein is present largely in the cytoplasm but also associates with the mitochondrial outer membrane. Mutations in this gene have been associated with Parkinson disease-8.



Immunohistochemistry of paraffinembedded Mouse kidney using LRRK2 Rabbit pAb at dilution of 1:100 (40x lens). Perform microwave antigen retrieval with 10 mM PBS buffer pH 7.2 before commencing with IHC staining protocol



Immunofluorescence analysis of C2C12 cells using LRRK2 Rabbit pAb at dilution of 1:100 (40x lens). Blue: DAPI for nuclear staining.