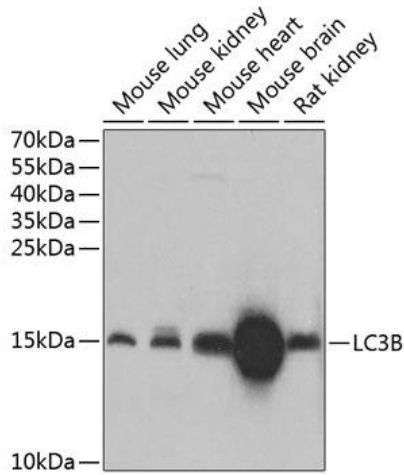
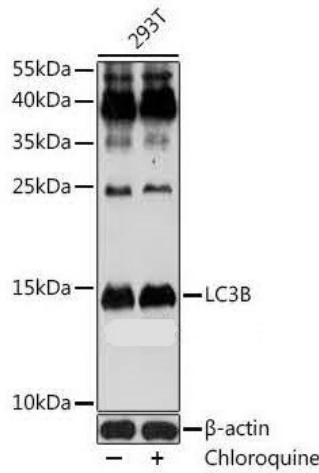
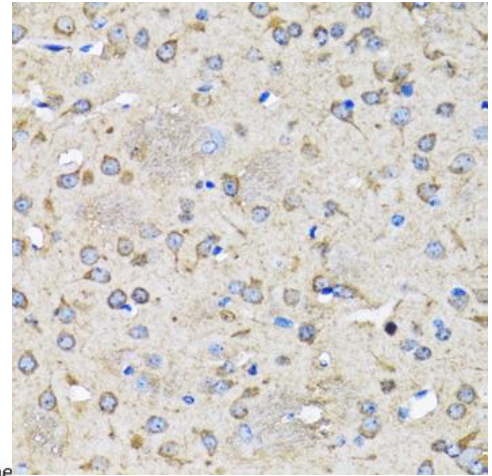

Product name:	MAP1LC3b
Cat number:	AB-83629
Conjugate:	Unconjugated
Size:	100 ug
Clone:	POLY
Concentration:	1mg/ml
Host:	Rb
Isotype:	IgG
Reactivity:	Hu, Ms, Rt
Applications:	Western Blot: 1:500-1:2000 Immunohistochemistry (paraffin-embedded tissues): 1:50-1:200 Immunofluorescence: 1:20-1:200
Molecular Weight:	14kDa
Purification:	Purified
Form:	Liquid
Buffer:	PBS with 0.02% sodium azide, 50% glycerol pH 7.3
Storage:	Store at -20°C. Avoid freeze / thaw cycles.
Background:	The product of this gene is a subunit of neuronal microtubule-associated MAP1A and MAP1B proteins, which are involved in microtubule assembly and important for neurogenesis. Studies on the rat homolog implicate a role for this gene in autophagy, a process that involves the bulk degradation of cytoplasmic component.



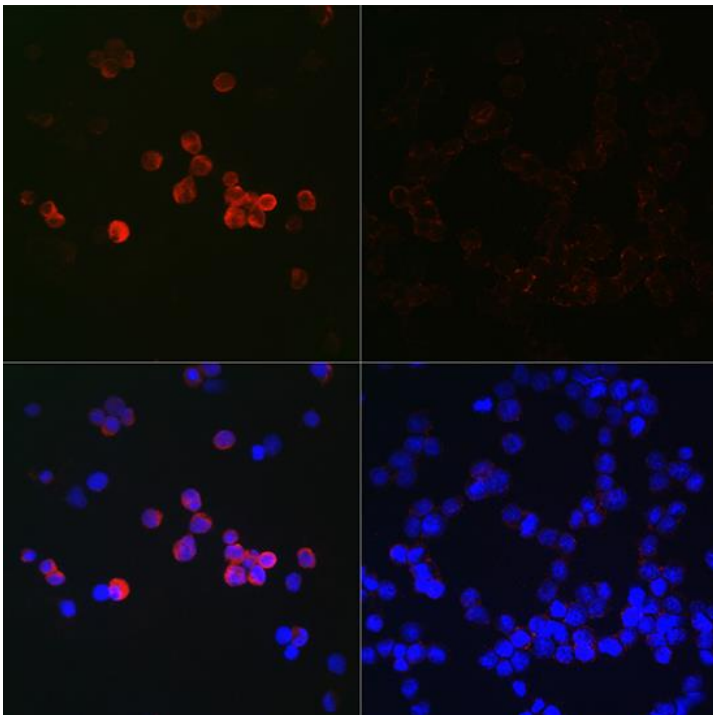
Western blot analysis of extracts of various cell lines, using LC3B antibody at 1:1000 dilution. Secondary antibody: HRP Goat Anti-Rabbit IgG (H+L) at 1:10000 dilution. Lysates/proteins: 25ug per lane. Blocking buffer: 3% nonfat dry milk in TBST. Detection: ECL West Pico Plus. Exposure time: 30s..



Western blot analysis of extracts of 293T cells, using LC3B antibody at 1:1000 dilution. 293T cells were treated by chloroquine (50 μ M) at 37°C for 20 hours. Secondary antibody: HRP Goat Anti-Rabbit IgG (H+L) at 1:10000 dilution. Lysates/proteins: 25ug per lane. Blocking buffer: 3% BSA. Detection: ECL Enhanced Kit Exposure time: 180s.



Immunohistochemistry of paraffin-embedded rat brain using LC3B antibody at dilution of 1:100 (40x lens).



Immunofluorescence analysis of 293T cells using LC3B Rabbit pAb at dilution of 1:100 (40x lens). 293T cells were treated by Chloroquine (50 μ M) at 37°C for 20 hours. Blue: DAPI for nuclear staining.