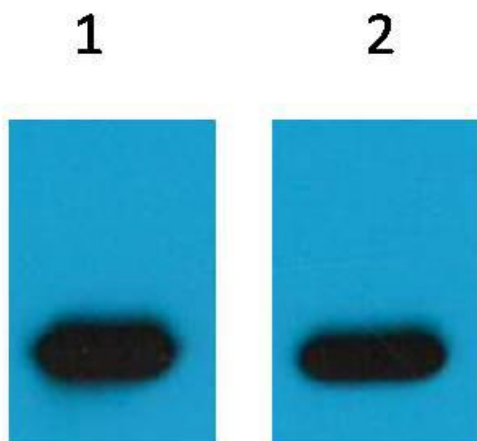


<b>Product name:</b>	mCherry-Tag Mouse Monoclonal Antibody
<b>Cat number:</b>	MAB-95043
<b>Conjugate:</b>	Unconjugated
<b>Size:</b>	100 ug
<b>Clone:</b>	CH7
<b>Concentration:</b>	1mg/ml
<b>Host:</b>	Mouse
<b>Isotype:</b>	IgG
<b>Immunogen:</b>	Recombinant Protein
<b>Applications:</b>	Western Blot:1/5000 Immunofluorescence:1/200 Immunohistochemistry:1/200 Immunoprecipitation:1/100
<b>Form:</b>	Liquid
<b>Buffer:</b>	PBS with 0.02% sodium azide and 50% glycerol pH 7.4
<b>Storage:</b>	Store at -20°C. Avoid repeated freeze-thaw cycles.
<b>Background:</b>	mCherry is a fluorophore (a fluorescent molecule) used in biotechnology as a tracer to follow the flow of fluids, as a marker when tagged to molecules and cells components. mCherry is a monomeric fluorescent construct with peak absorption/emission at 587 nm and 610 nm, respectively. It is resistant to photobleaching and is stable. mCherry is sometimes preferred to other fluorophores due to its colour, as well as its photostability compared to other monomeric fluorophores.



Western blot analysis of mCherry Recombinant protein with mCherry diluted at 1) 1:5,000 2) 1:10,000