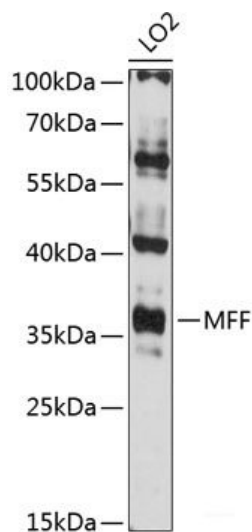


| | |
|--------------------------|--|
| Product name: | MFF Rabbit Polyclonal Antibody |
| Cat number: | AB-84491 |
| Conjugate: | Unconjugated |
| Size: | 100 ug |
| Clone: | POLY |
| Concentration: | 1mg/ml |
| Host: | Rabbit |
| Isotype: | IgG |
| Immunogen: | Recombinant fusion protein of human MFF |
| Reactivity: | Human |
| Applications: | Western Blot: 1:500-1:2000 |
| Molecular Weight: | 38kDa |
| Purification: | Affinity purification |
| Form: | Liquid |
| Buffer: | PBS with 0.01% thiomersal,50% glycerol,pH7.3. |
| Storage: | Store at -20°C. Avoid freeze/thaw cycles. |
| Background: | This is a nuclear gene encoding a protein that functions in mitochondrial and peroxisomal fission. The encoded protein recruits dynamin-1-like protein (DNM1L) to mitochondria. There are multiple pseudogenes for this gene on chromosomes 1, 5, and X. Alternative splicing results in multiple transcript variants. |



Western blot analysis of extracts of LO2 cells using MFF Polyclonal Antibody at 1:3000 dilution.