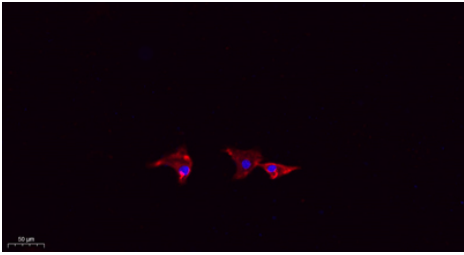
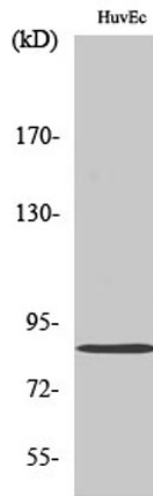


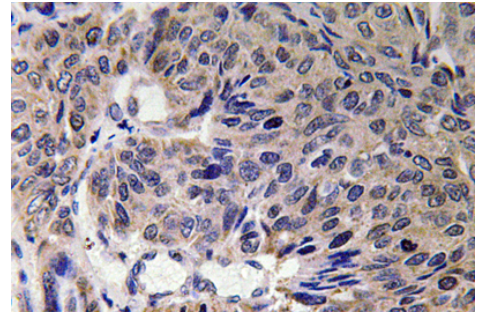
Product name:	Mfn2 rabbit Polyclonal Antibody
Cat number:	ABE2784
Conjugate:	unconjugated
Size:	100 ug
Clone:	Polyclonal
Concentration:	1 mg/ml
Host:	Rabbit
Isotype:	IgG
Immunogen:	The antiserum was produced against synthesized peptide derived from human Mfn2. AA range:354-403
Reactivity:	Human;Mouse;Rat
Applications:	Western Blot: 1/500 - 1/2000. IHC-p: 1:100-300 ELISA: 1/20000. IF 1:100-300 Not yet tested in other applications.
Molecular Weight:	86kD
Form:	liquid
Storage:	-20°C/1 year
Background:	This gene encodes a mitochondrial membrane protein that participates in mitochondrial fusion and contributes to the maintenance and operation of the mitochondrial network. This protein is involved in the regulation of vascular smooth muscle cell proliferation, and it may play a role in the pathophysiology of obesity. Mutations in this gene cause Charcot-Marie-Tooth disease type 2A2, and hereditary motor and sensory neuropathy VI, which are both disorders of the peripheral nervous system. Defects in this gene have also been associated with early-onset stroke. Two transcript variants encoding the same protein have been identified. [provided by RefSeq, Jul 2008],



Immunofluorescence analysis of A549. 1,primary Antibody(red) was diluted at 1:200(4°C overnight). 2, Goat Anti Rabbit IgG (H&L) - Alexa Fluor 594 Secondary antibody was diluted at 1:1000(room temperature, 50min).3, Picture B: DAPI(blue) 10min.



Western Blot analysis of various cells using Mfn2 Polyclonal Antibody diluted at 1:1000



Immunohistochemistry analysis of Mfn2 antibody in paraffin-embedded human lung carcinoma tissue.