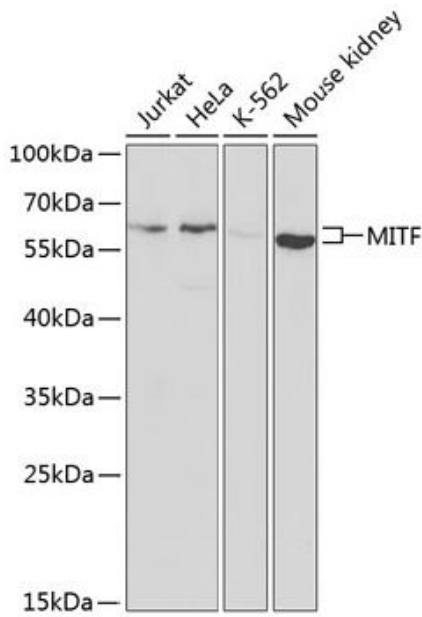


---

<b>Product name:</b>	MITF
<b>Cat number:</b>	MAB-94447
<b>Size:</b>	100 ug
<b>Clone:</b>	DG7V5
<b>Concentration:</b>	1mg/ml
<b>Host:</b>	Rb
<b>Isotype:</b>	IgG
<b>Reactivity:</b>	Hu, Ms, Rt
<b>Applications:</b>	Western blotting 1:500-1:1000
<b>Molecular Weight:</b>	65 kDa
<b>Purification:</b>	Monoclonal antibody is produced by immunizing animals with a synthetic peptide corresponding to residues surrounding Gly335 of human MITF protein.
<b>Form:</b>	Liquid
<b>Buffer:</b>	PBS with 0.02% sodium azide, 50% glycerol, pH7.3.
<b>Storage:</b>	Store at -20°C. Avoid freeze / thaw cycles.
<b>Background:</b>	Microphthalmia-associated transcription factor (MITF) is a basic helix-loop-helix leucine zipper transcription factor that is most widely known for its roles in melanocyte, ophthalmic, and osteoclast development (1-3). In humans, MITF can function as a melanoma oncogene (4) and mutations in the corresponding MITF gene are associated with Waardenburg syndrome type 2, an auditory-pigmentary syndrome characterized by developmental defects in cells derived from neural crest (5). At least 12 isoforms of MITF have been identified, which exhibit differential patterns of expression of cell and tissue types (6). MITF (D5G7V) Rabbit mAb recognizes endogenous levels of total MITF protein. The antibody is predicted to recognize all known isoforms of MITF. Based on sequence similarities, this antibody may also detect the related MIT/TEF protein family member TFE3.



Western blot analysis of extracts of various cell lines, using MITF antibody at 1:1000 dilution. Secondary antibody: HRP Goat Anti-Rabbit IgG (H+L) at 1:10000 dilution. Lysates/proteins: 25ug per lane. Blocking buffer: 3% nonfat dry milk in TBST.