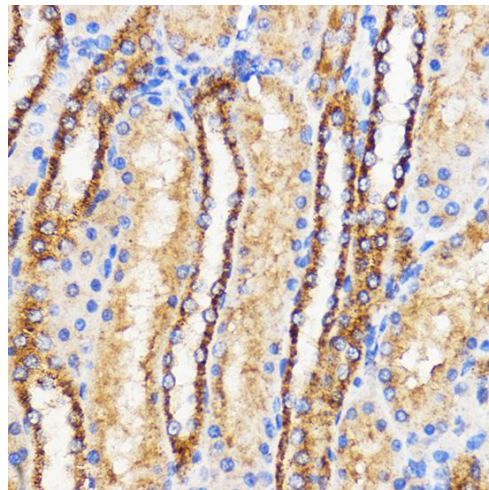
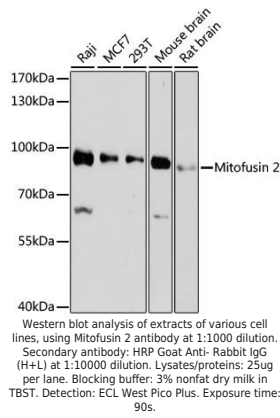
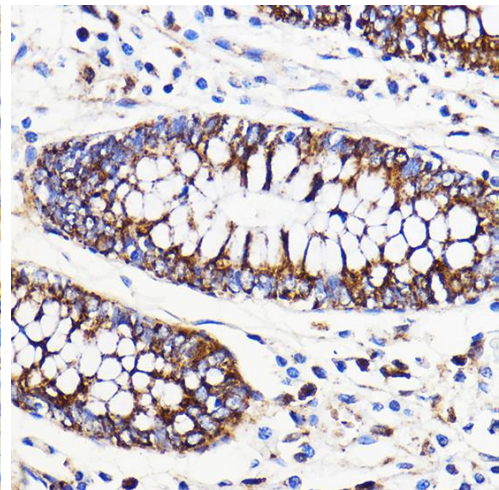
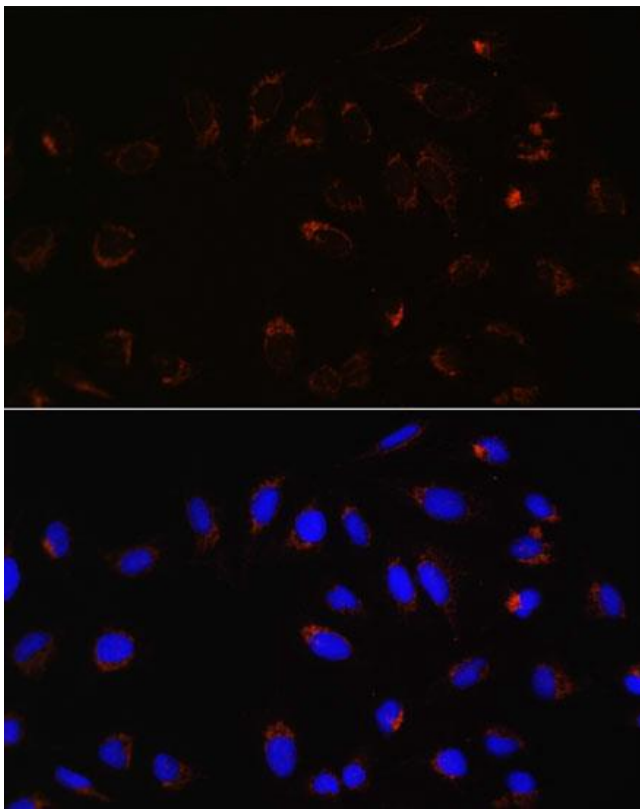

Product name:	Mitofusin 2
Cat number:	MAB-94608
Size:	100 ug
Clone:	NIAR164
Concentration:	1mg/ml
Host:	Rb
Isotype:	IgG
Immunogen:	A synthetic peptide corresponding to a sequence within amino acids 500-600 of human Mitofusin 2
Reactivity:	Hu, Ms, Rt
Applications:	Western Blot: 1:500 - 1:2000 Immunohistochemistry: 1:50 - 1:200 Immunofluorescence: 1:50 - 1:200 Immunoprecipitation: 1:50 - 1:200
Molecular Weight:	100kDa
Purification:	Aff. Pur.
Form:	Liquid
Buffer:	PBS with 0.02% sodium azide, 50% glycerol, pH7.3.
Storage:	Store at -20°C. Avoid freeze / thaw cycles.
Background:	This gene encodes a mitochondrial membrane protein that participates in mitochondrial fusion and contributes to the maintenance and operation of the mitochondrial network. This protein is involved in the regulation of vascular smooth muscle cell proliferation, and it may play a role in the pathophysiology of obesity. Mutations in this gene cause Charcot-Marie-Tooth disease type 2A2, and hereditary motor and sensory neuropathy VI, which are both disorders of the peripheral nervous system. Defects in this gene have also been associated with early-onset stroke. Two transcript variants encoding the same protein have been identified.



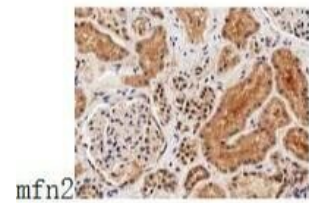
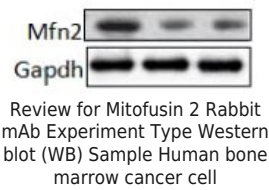
Immunohistochemistry of paraffin embedded Rat kidney using Mitofusin 2 Rabbit mAb at dilution of 1:100 (40x lens).



Immunohistochemistry of paraffin embedded Human colon using Mitofusin 2 Rabbit mAb at dilution of 1:100 (40x lens).



Immunofluorescence analysis of U-2 OS cells using MFN2 antibody at dilution of 1:100. Blue: DAPI for nuclear staining.



Review for Mitofusin 2 Rabbit mAb Experiment Type Immunohistochemistry (IHC) Sample Human bone marrow cancer cell Description Immunohistochemistry of paraffin-embedded Human bone marrow cancer cell by using antibody at dilution of 1:100