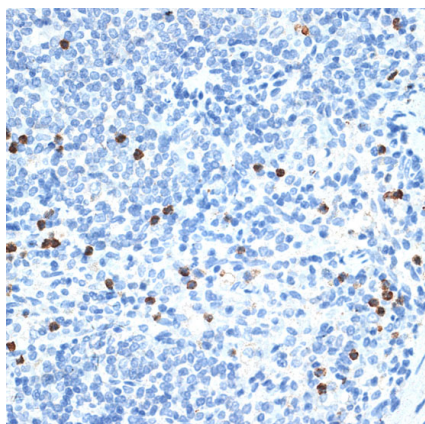
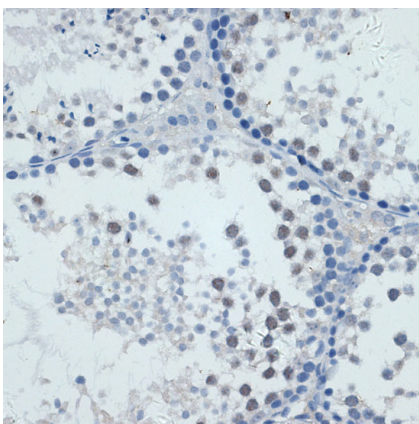


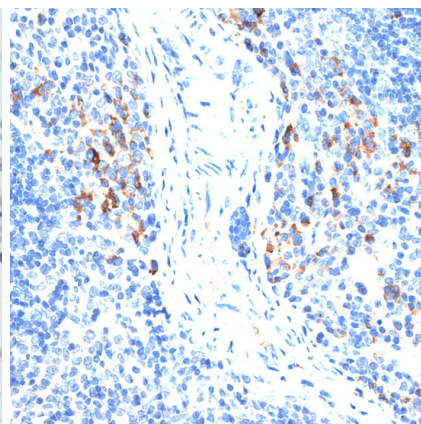
Product name:	MMP9 Rabbit Polyclonal Antibody
Cat number:	ABS11132
Conjugate:	Unconjugated
Size:	100 ug
Clone:	POLY
Concentration:	1mg/ml
Host:	Rabbit
Isotype:	IgG
Reactivity:	Human;Mouse;Rat
Applications:	WB, IHC, IF
Purification:	Affinity purification
Form:	Liquid
Storage:	Store at -20°C. Avoid freeze / thaw cycles.



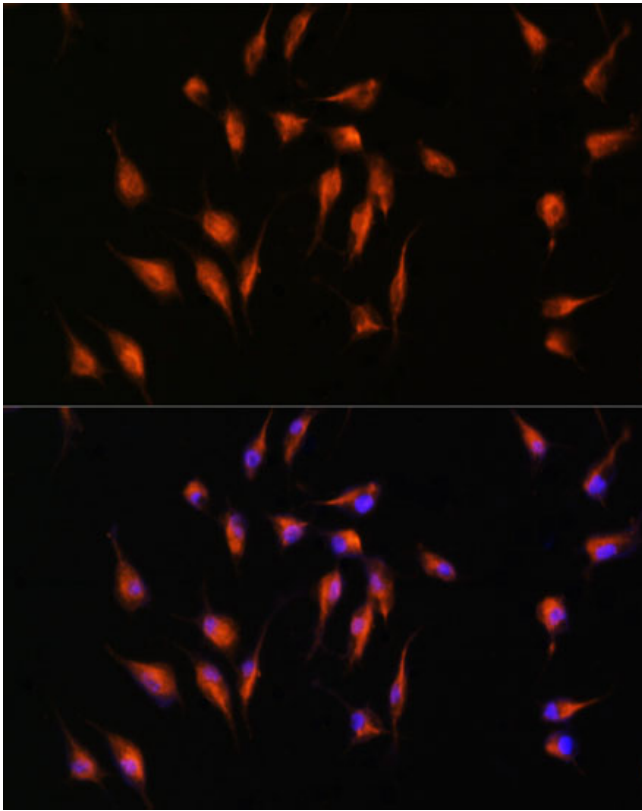
Immunohistochemistry of paraffin-embedded rat spleen using MMP9 antibody at dilution of 1:100 (40x lens). Perform microwave antigen retrieval with 10 mM PBS buffer pH 7.2 before commencing with IHC staining protocol.



Immunohistochemistry of paraffin-embedded mouse testis using MMP9 antibody at dilution of 1:100 (40x lens). Perform microwave antigen retrieval with 10 mM PBS buffer pH 7.2 before commencing with IHC staining protocol.



Immunohistochemistry of paraffin-embedded mouse spleen using MMP9 antibody at dilution of 1:100 (40x lens). Perform microwave antigen retrieval with 10 mM PBS buffer pH 7.2 before commencing with IHC staining protocol.



Immunofluorescence analysis of L929 cells using MMP9 antibody at dilution of 1:100. Blue: DAPI for nuclear staining.