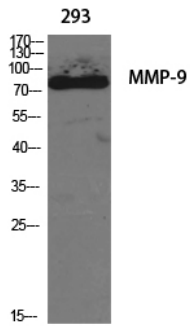
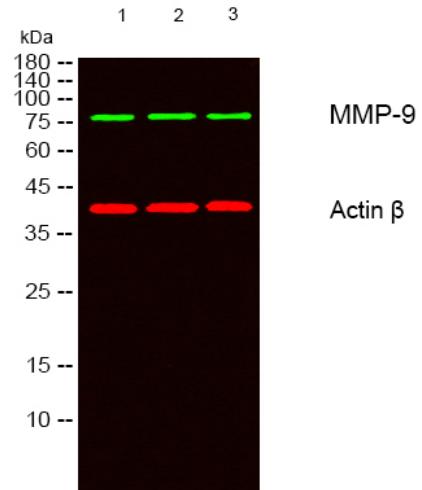

Product name:	MMP9 Rabbit Polyclonal Antibody
Cat number:	AB-84351
Conjugate:	Unconjugated
Size:	100 ug
Clone:	POLY
Concentration:	1mg/ml
Host:	Rabbit
Isotype:	IgG
Immunogen:	The antiserum was produced against synthesized peptide derived from human MMP-9. AA range:651-700
Reactivity:	Human;Mouse;Rat
Applications:	Western Blot: 1/500 - 1/2000. Immunohistochemistry (paraffin-embedded tissues): 1:100-300 Immunofluorescence: 1:100-300
Molecular Weight:	78kD
Purification:	The antibody was affinity-purified from rabbit antiserum by affinitychromatographyusing epitope-specific immunogen.
Form:	Liquid
Buffer:	Liquid in PBS containing 50% glycerol, 0.5% BSA and 0.02% sodium azide.
Storage:	Store at -20°C. Avoid repeated freeze-thaw cycles.
Background:	matrix metalloproteinase 9(MMP9) Homo sapiens Proteins of the matrix metalloproteinase (MMP) family are involved in the breakdown of extracellular matrix in normal physiological processes, such as embryonic development, reproduction, and tissue remodeling, as well as in disease processes, such as arthritis and metastasis. Most MMP's are secreted as inactive proproteins which are activated when cleaved by extracellular proteinases. The enzyme encoded by this gene degrades type IV and V collagens. Studies in rhesus monkeys suggest that the enzyme is involved in IL-8-induced mobilization of hematopoietic progenitor cells from bone marrow, and murine studies suggest a role in tumor-associated tissue remodeling.



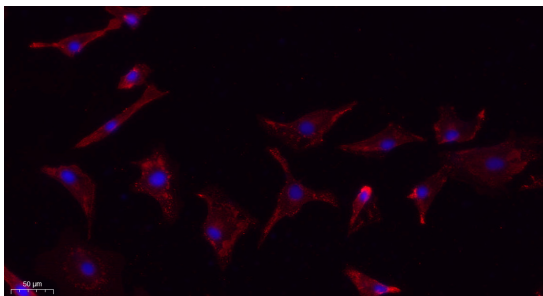
Western Blot analysis of various cells using MMP-9 Polyclonal Antibody diluted at 1:1000



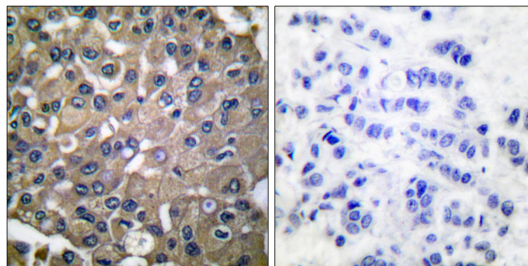
Western Blot analysis of HepG2 cells using MMP-9 Polyclonal Antibody diluted at 1:1000



Western blot analysis of lysates from 1) 293, 2) HEPG2, 3) K562 cells, [Green] primary antibody was diluted at 1:1000, 4° over night, secondary antibody as diluted at 1:10000, 37° 1hour. [Red] Actin β Monoclonal Antibody(SB7) antibody was diluted at 1:5000 as loading control, 4° over night, secondary antibody was diluted at 1:10000, 37° 1hour.



Immunofluorescence analysis of A549. 1, primary Antibody(red) was diluted at 1:200(4°C overnight). 2. Goat Anti Rabbit IgG (H&L) - Alexa Fluor 594 Secondary antibody was diluted at 1:1000(room temperature, 50min). 3, Picture B: DAPI(blue) 10min.



Immunohistochemistry analysis of paraffin-embedded human breast carcinoma tissue, using MMP-9 Antibody. The picture on the right is blocked with the synthesized peptide.