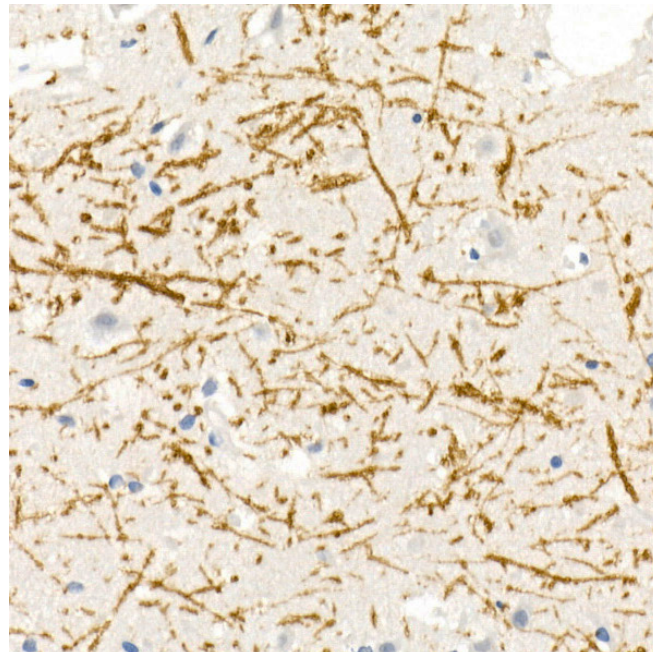
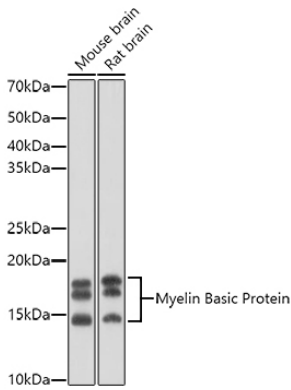
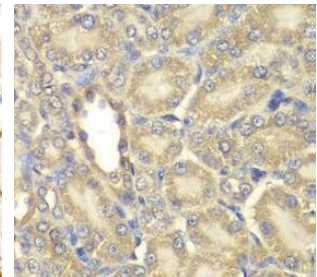
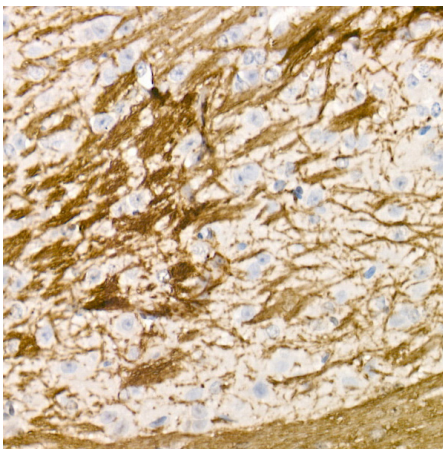

Product name:	Myelin basic protein
Cat number:	AB-84315
Conjugate:	Unconjugated
Size:	100 ug
Clone:	POLY
Concentration:	1mg/ml
Host:	Rabbit
Isotype:	IgG
Immunogen:	Recombinant fusion protein containing a sequence corresponding to amino acids 80-165 of human Myelin Basic Protein
Reactivity:	Human,Mouse,Rat
Applications:	Western Blot: 1:500 - 1:2000 Immunohistochemistry: 1:50 - 1:200 Immunofluorescence: 1:50 - 1:200
Molecular Weight:	12-18kDa
Purification:	Affinity purification
Form:	Liquid
Buffer:	PBS with 0.02% sodium azide,50% glycerol,pH7.3.
Storage:	Store at -20°C for 12 months (Avoid repeated freeze / thaw cycles.)
Background:	<p>The protein encoded by the classic MBP gene is a major constituent of the myelin sheath of oligodendrocytes and Schwann cells in the nervous system. However, MBP-related transcripts are also present in the bone marrow and the immune system. These mRNAs arise from the long MBP gene (otherwise called "Golli-MBP") that contains 3 additional exons located upstream of the classic MBP exons. Alternative splicing from the Golli and the MBP transcription start sites gives rise to 2 sets of MBP-related transcripts and gene products. The Golli mRNAs contain 3 exons unique to Golli-MBP, spliced in-frame to 1 or more MBP exons. They encode hybrid proteins that have N-terminal Golli aa sequence linked to MBP aa sequence. The second family of transcripts contain only MBP exons and produce the well characterized myelin basic proteins. This complex gene structure is conserved among species suggesting that the MBP transcription unit is an integral part of the Golli transcription unit and that this arrangement is important for the function and/or regulation of these genes.</p>



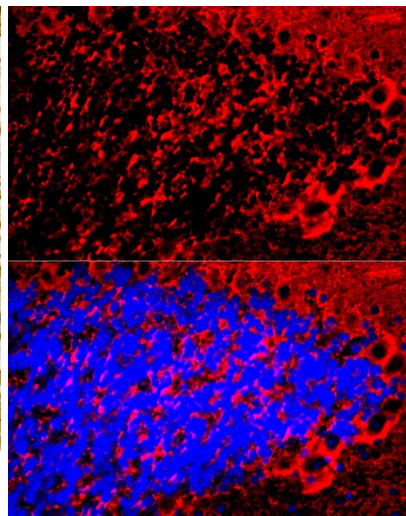
Immunohistochemistry analysis of paraffin-embedded Human brain using Myelin Basic Protein Rabbit pAb at dilution of 1:20 (40x lens). High pressure antigen retrieval performed with 0.01M Citrate Bufferr (pH 6.0) prior to IHC staining.



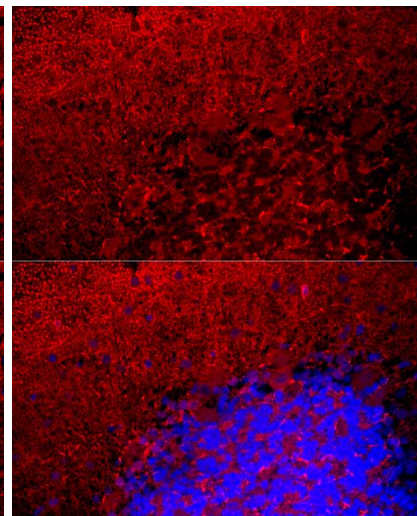
Immunohistochemistry of paraffin-embedded rat kidney tissue slide using (MBP Antibody) at dilution of 1:200



Immunohistochemistry analysis of paraffin-embedded Rat brain using Myelin Basic Protein Rabbit pAb at dilution of 1:20 (40x lens). High pressure antigen retrieval performed with 0.01M Citrate Bufferr (pH 6.0) prior to IHC staining.



Immunofluorescence analysis of paraffin-embedded mouse brain using Myelin Basic Protein Rabbit pAb at dilution of 1:50 (40x lens). Secondary antibody: Cy3- conjugated Goat anti-Rabbit IgG (H+L) at 1:500 dilution. Blue: DAPI for nuclear staining.Perform microwave antigen retrieval with 0.01 M citrate buffer (pH 6.0) prior to IF staining.



Immunofluorescence analysis of paraffin-embedded rat brain using Myelin Basic Protein Rabbit pAb at dilution of 1:50 (40x lens). Secondary antibody: Cy3-conjugated Goat anti-Rabbit IgG (H+L) at 1:500 dilution. Blue: DAPI for nuclear staining.Perform microwave antigen retrieval with 0.01 M citrate buffer (pH 6.0) prior to IF staining.