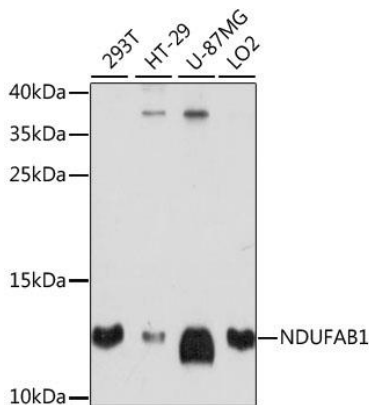
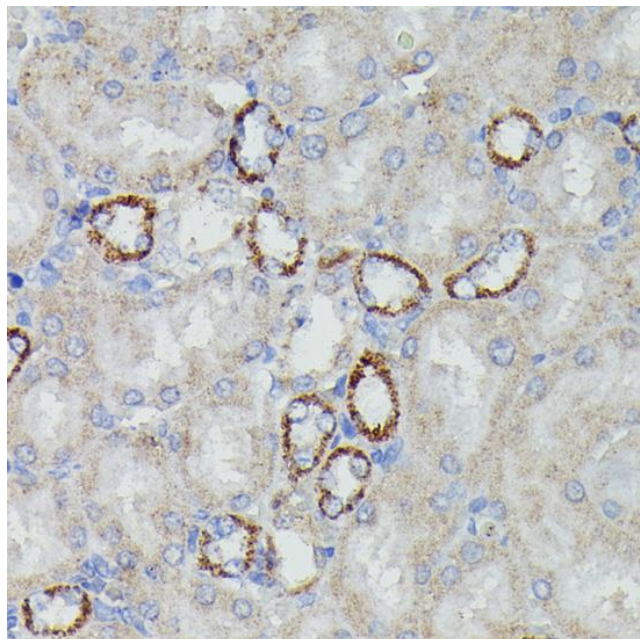


Product name:	NDUFAB1
Cat number:	AB-84350
Size:	100ug
Clone:	POLY
Concentration:	1mg/ml
Host:	Rb
Isotype:	IgG
Immunogen:	A synthetic peptide corresponding to a sequence within amino acids 50-150 of human NDUFAB1.
Reactivity:	Hu, Ms, Rt
Applications:	Western Blot: 1:500 - 1:2000 Immunohistochemistry: 1:50 - 1:200
Molecular Weight:	13kDa
Purification:	Aff. Pur.
Form:	Liquid
Buffer:	Liquid in PBS containing 50% glycerol, and 0.02% sodium azide.
Storage:	Store at -20°C, and avoid repeat freeze-thaw cycles.



Western blot analysis of extracts of various cell lines, using NDUFAB1 antibody at 1:1000 dilution. Secondary antibody: HRP Goat Anti-Rabbit IgG (H+L) (AS014) at 1:10000 dilution. Lysates/proteins: 25ug per lane. Blocking buffer: 3% nonfat dry milk in TBST. Detection: ECL West Pico Plus. Exposure time: 90s.



Immunohistochemistry of paraffin embedded rat kidney using NDUFAB1 antibody at dilution of 1:100 (40x lens).