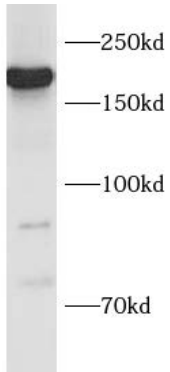
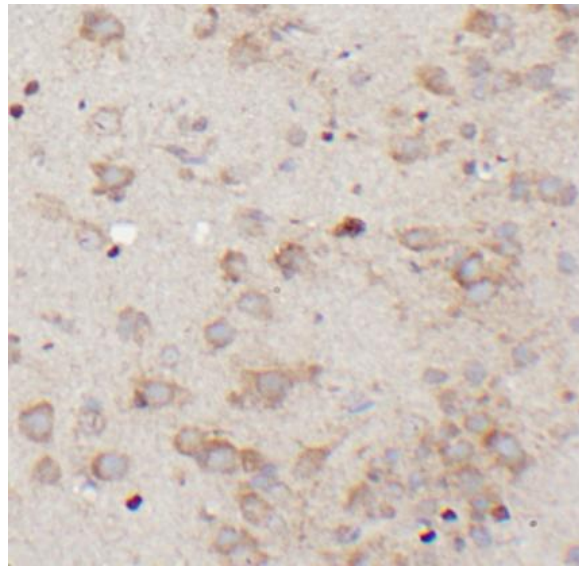


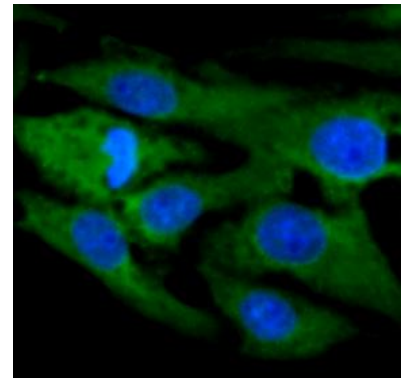
Product name:	Nestin Rabbit Polyclonal Antibody
Cat number:	AB-84781
Conjugate:	Unconjugated
Size:	100 ug
Clone:	POLY
Concentration:	1mg/ml
Host:	Rabbit
Isotype:	IgG
Immunogen:	nestin
Applications:	Western Blot: 1:500-1:2000 Immunohistochemistry: 1:500-1:200 Immunofluorescence: 1:20-1:200
Molecular Weight:	170 kDa
Purification:	Immunogen affinity purified
Form:	Liquid
Buffer:	PBS with 0.02% sodium azide and 50% glycerol pH 7.3
Storage:	Store at -20°C for 12 months (Avoid repeated freeze / thaw cycles.)
Background:	Nestin, also named as NES and Nbla00170, is a class VI intermediate filament protein expressed in stem cells of the central nervous system(CNS) but not in mature CNS cells. Its expression is used extensively as a marker for neural lineage cells derived from human embryonic stem(hES) and induced pluripotent stem(iPS) cells. Nestin is also expressed in non-neural stem cell populations such as pancreatic islet progenitors and hematopoietic progenitors.



MCF7 cells were subjected to SDS PAGE followed by western blot with NES antibody at dilution of 1:1000



Immunohistochemistry of paraffin-embedded mouse brain using NES antibody at dilution of 1:50



Immunofluorescent analysis of SH-SY5Y cells using NES antibody at dilution of 1:50.