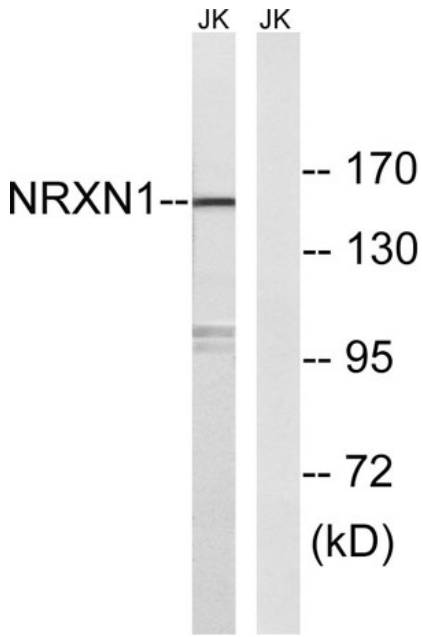
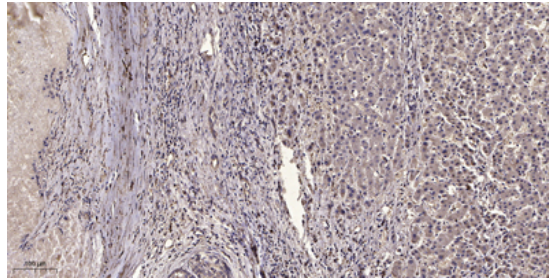

Product name:	Neurexin I rabbit Polyclonal Antibody
Cat number:	ABE8030
Conjugate:	unconjugated
Size:	100 ug
Clone:	Polyclonal
Concentration:	1 mg/ml
Host:	Rabbit
Isotype:	IgG
Immunogen:	The antiserum was produced against synthesized peptide derived from human NRXN1. AA range:502-551
Reactivity:	Human;Mouse;Rat
Applications:	WB 1:500-2000;IHC-p 1:50-300
Molecular Weight:	150kD
Purification:	The antibody was affinity-purified from rabbit antiserum by affinity-chromatography using epitope-specific immunogen.
Form:	liquid
Buffer:	Liquid in PBS containing 50% glycerol, 0.5%BSAand0.02% sodium azide.
Storage:	-20°C/1 year
Background:	NRXN1 (neurexin 1) encodes a single-pass type I membrane protein that belongs to the neurexin family. Neurexins are cell-surface receptors that bind neuroligins to form Ca(2+)-dependent neurexin/neuroligin complexes at synapses in the central nervous system. This complex is required for efficient neurotransmission and is involved in the formation of synaptic contacts. Three members of this gene family have been studied in detail and are estimated to generate over 3000 variants through the use of two alternative promoters (alpha and beta) and extensive alternative splicing in each family member. Recently, a third promoter (gamma) was identified for NRXN1 in the 3' region. Mutations in NRXN1 are associated with Pitt-Hopkins-like syndrome-2 and may contribute to susceptibility to schizophrenia.



Western blot analysis of lysates from Jurkat cells, using NRXN1 Antibody. The lane on the right is blocked with the synthesized peptide.



Immunohistochemical analysis of paraffin-embedded human liver cancer. 1, Antibody was diluted at 1:200(4° overnight). 2, Tris-EDTA,pH9.0 was used for antigen retrieval. 3,Secondary antibody was diluted at 1:200(room temperature, 45min).