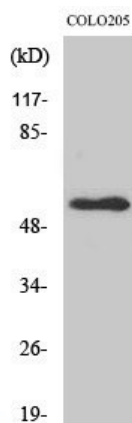

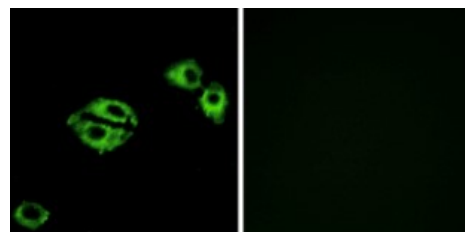


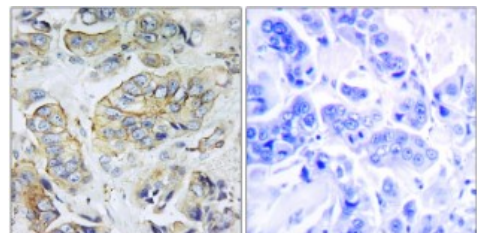
Product name:	Neuropeptide Y receptor 5 (NPY5R)
Cat number:	AB-84233
Conjugate:	Unconjugated
Size:	100 ug
Clone:	POLY
Concentration:	1mg/ml
Host:	Rb
Isotype:	IgG
Immunogen:	Synthesized peptide derived from human NPY5-R
Reactivity:	Hu, Ms, Rt
Applications:	Western Blot: 1:500-1:2000 Immunohistochemistry: 1:100-1:300 Immunofluorescence: 1:200-1:1000 ELISA: 1:20000
Molecular Weight:	48kDa
Purification:	The antibody was affinity-purified from rabbit antiserum by affinitychromatography using epitope-specific immunogen.
Form:	Liquid
Buffer:	Liquid in PBS containing 50% glycerol, 0.5% BSA and 0.02% sodium azide.
Storage:	Store at -20°C, and avoid repeat freeze-thaw cycles.
Background:	Receptor for neuropeptide Y and peptide YY. The activity of this receptor is mediated by G proteins that inhibit adenylate cyclase activity. Seems to be associated with food intake. Could be involved in feeding disorders.



 Western Blot (WB) analysis of specific cells using NPY5-R polyclonal antibody.



Immunofluorescence (A549 cells - right side blocked with peptide).



Immunohistochemistry - (human breast carcinoma - right side blocked with peptide)