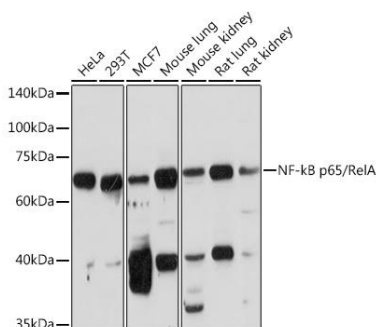
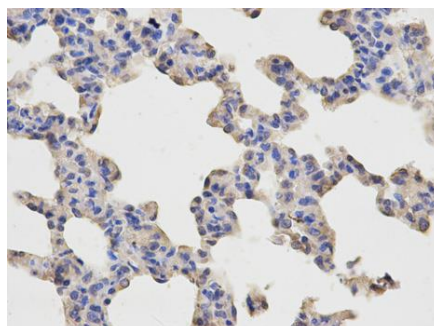


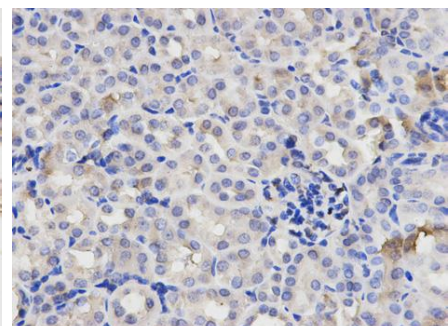
Product name:	NFKB p65
Cat number:	AB-82033
Conjugate:	Unconjugated
Size:	100 ug
Clone:	POLY
Concentration:	1mg/ml
Host:	Rb
Isotype:	IgG
Immunogen:	Recombinant fusion protein containing a sequence corresponding to amino acids 50-180 of human NF-kB p65.
Reactivity:	Hu, Ms, Rt
Applications:	Western Blot: 1:1000 Immunohistochemistry: 1:50 - 1:100 Immunofluorescence: 1:50 - 1:100 Immunoprecipitation: 1:50 - 1:100
Molecular Weight:	65 kDa
Purification:	Aff. Pur.
Form:	Liquid
Buffer:	PBS with 0.02% sodium azide, 50% glycerol, pH7.3.
Storage:	Store at -20°C. Avoid freeze / thaw cycles.
Background:	NF-kappa-B is a ubiquitous transcription factor involved in several biological processes. It is held in the cytoplasm in an inactive state by specific inhibitors. Upon degradation of the inhibitor, NF-kappa-B moves to the nucleus and activates transcription of specific genes. NF-kappa-B is composed of NFKB1 or NFKB2 bound to either REL, RELA, or RELB. The most abundant form of NF-kappa-B is NFKB1 complexed with the product of this gene, RELA. Four transcript variants encoding different isoforms have been found for this gene.



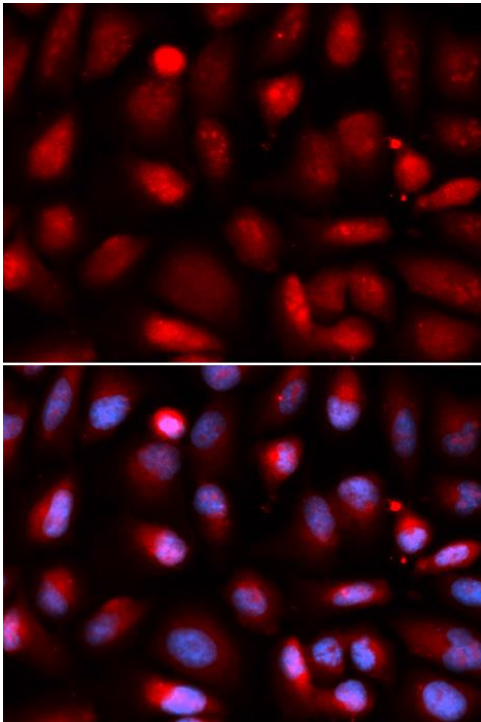
Western blot analysis of extracts of various cell lines, using NF-kB p65 antibody at 1:1000 dilution. Secondary antibody: HRP Goat Anti-Rabbit IgG (H+L) at 1:10000 dilution. Lysates/proteins: 25ug per lane. Blocking buffer: 3% nonfat dry milk in TBST. Detection: ECL West Pico Plus Exposure time: 90s.



Immunohistochemistry of paraffin-embedded rat lung using NF-kB p65 Antibody at dilution of 1:100 (40x lens).

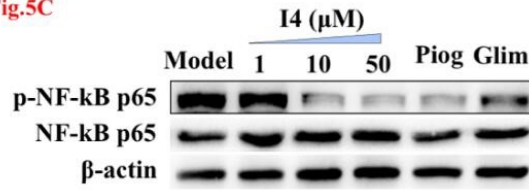


Immunohistochemistry of paraffin-embedded rat kidney using NF-kB p65 Antibody at dilution of 1:100 (40x lens).



Immunofluorescence analysis of U2OS cells using NF-kB p65 antibody.

Fig.5C



蛋白上样量：15μl；
抗体使用量：8μl；
抗体稀释度：1:500；
实验组织：ox-LDL刺激的Raw264.7细胞

Application: Western blot (WB) Sample: RAW264.7 Loading Amount : 15 ug Dilution: 1:500
Incubation time: over night Temperature 4 °C Exposure: 15 seconds Observed Band: 65 kDa
Remarks Western blot analysis of extracts of mouse atherosclerosis arterial tissue, using
RELA antibody at 1:500 dilution.The band is specific and clear.