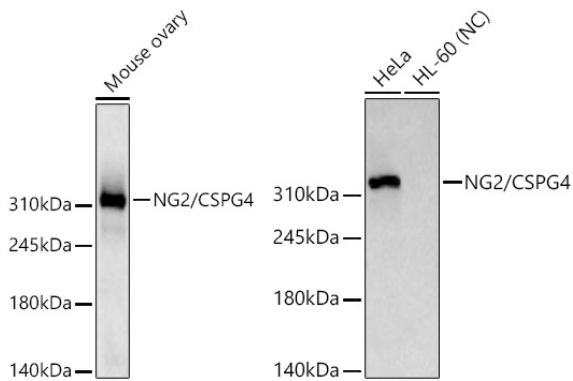
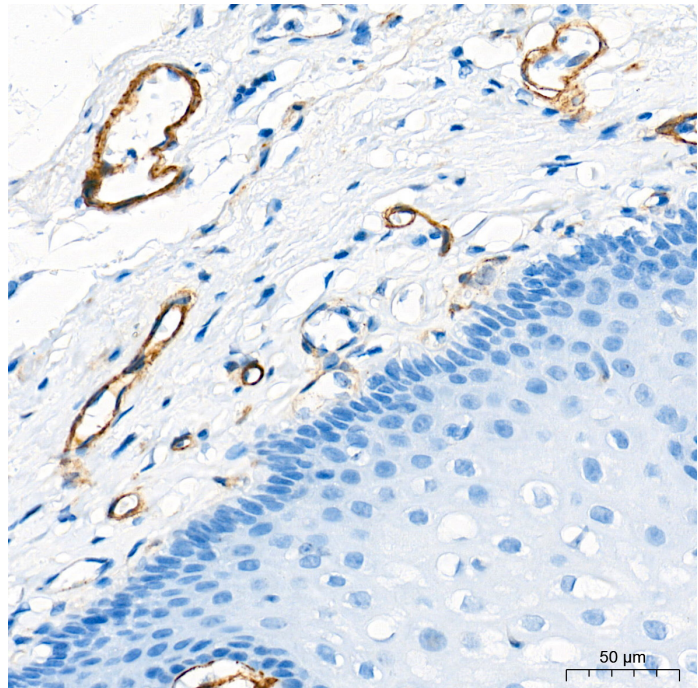

Product name:	NG2/CSPG4 Rabbit Monoclonal Antibody
Cat number:	MAB-94805
Conjugate:	Unconjugated
Size:	100 ug
Clone:	ARC64580
Concentration:	1mg/ml
Host:	Rabbit
Isotype:	IgG
Immunogen:	Recombinant protein. This information is considered to be commercially sensitive.
Reactivity:	Human, Mouse
Applications:	WB 1:1000 - 1:2000 IF-P 1:200 - 1:1000 IHC-P 1:500 - 1:2000 FC 1:500 - 1:1000 ELISA Recommended starting concentration is 1 µg/mL. Please optimize the concentration based on your specific assay requirements.
Molecular Weight:	450kDa
Purification:	Affinity purification
Form:	liquid
Buffer:	PBS containing 50% glycerol and 0.05% BSA, preserved with proclin300 or sodium azide (as specified on the Certificate of Analysis), pH 7.3.
Storage:	Store at -20°C. Avoid freeze / thaw cycles.
Background:	A human melanoma-associated chondroitin sulfate proteoglycan plays a role in stabilizing cell-substratum interactions during early events of melanoma cell spreading on endothelial basement membranes. CSPG4 represents an integral membrane chondroitin sulfate proteoglycan expressed by human malignant melanoma cells.



Western blot analysis of lysates from Mouse ovary using NG2/CSPG4 Rabbit mAb at 1:1000 dilution incubated overnight at 4°C. Secondary antibody: HRP-conjugated Goat anti-Rabbit IgG (H+L) at 1:10000 dilution. Lysates/proteins: 25 µg per lane. Blocking buffer: 3% nonfat dry milk in TBST. Detection: ECL West Pico Plus. Exposure time: 60s.

Western blot analysis of various lysates using NG2/CSPG4 Rabbit mAb at 1:1000 dilution incubated overnight at 4°C. Secondary antibody: HRP-conjugated Goat anti-Rabbit IgG (H+L) at 1:10000 dilution. Lysates/proteins: 25 µg per lane. Blocking buffer: 3% nonfat dry milk in TBST. Detection: ECL West Pico Plus. Negative control (NC): HL-60 Exposure time: 10s.



Immunohistochemistry analysis of paraffin-embedded Human esophagus tissue using NG2/CSPG4 Rabbit mAb at a dilution of 1:1000 (40x lens). High pressure antigen retrieval performed with 0.01M Tris-EDTA Buffer (pH 9.0) prior to IHC staining.