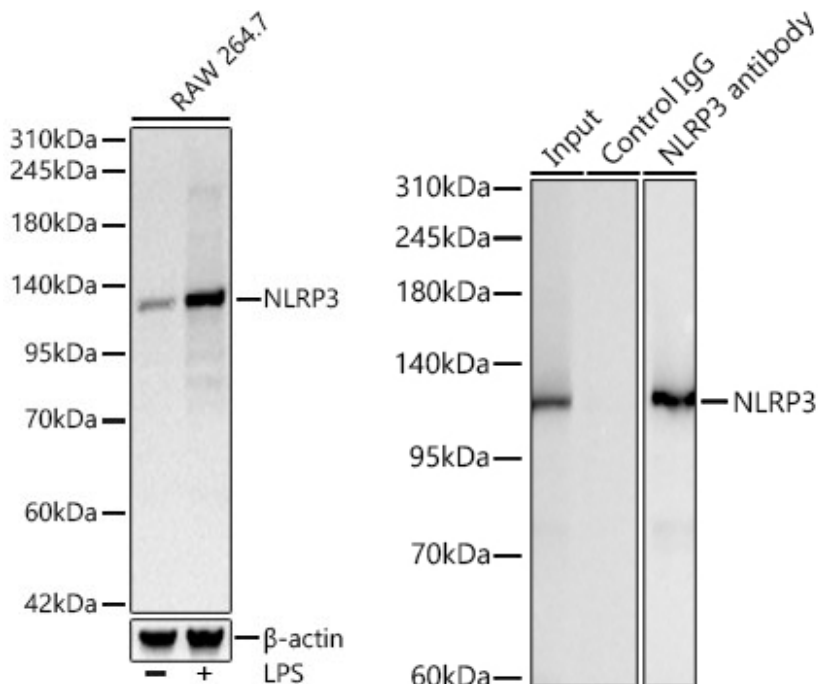


---

<b>Product name:</b>	NLRP3 Rabbit Monoclonal Antibody
<b>Cat number:</b>	MAB24294
<b>Conjugate:</b>	Unconjugated
<b>Size:</b>	100 ug
<b>Clone:</b>	ARC62768
<b>Concentration:</b>	1mg/ml
<b>Host:</b>	Rabbit
<b>Isotype:</b>	IgG
<b>Immunogen:</b>	Recombinant protein.This information is considered to be commercially sensitive.
<b>Reactivity:</b>	Mouse
<b>Applications:</b>	WB 1:1000 - 1:6000 IF/ICC 1:100 - 1:500 IP 0.5µg-4µg antibody for 200µg-400µg extracts of whole cells ELISA Recommended starting concentration is 1 µg/mL. Please optimize the concentration based on your specific assay requirements.
<b>Molecular Weight:</b>	118kDa
<b>Purification:</b>	Affinity purification
<b>Form:</b>	liquid
<b>Buffer:</b>	PBS with 0.09% Sodium azide,0.05% BSA,50% glycerol,pH7.3.
<b>Storage:</b>	Store at -20°C. Avoid freeze / thaw cycles.
<b>Background:</b>	Enables DNA-binding transcription factor binding activity and sequence-specific DNA binding activity. Involved in several processes, including positive regulation of T-helper cell differentiation; positive regulation of cytokine production; and response to bacterium. Acts upstream of or within several processes, including NLRP3 inflammasome complex assembly; activation of cysteine-type endopeptidase activity involved in apoptotic process; and defense response to virus. Located in cytoplasm and nucleus. Part of NLRP3 inflammasome complex. Is expressed in central nervous system and retina. Used to study CINCA Syndrome; familial cold autoinflammatory syndrome 1; and non-alcoholic fatty liver disease. Human ortholog(s) of this gene implicated in CINCA Syndrome; Muckle-Wells syndrome; autosomal dominant nonsyndromic deafness 34; familial cold autoinflammatory syndrome 1; and urticaria. Orthologous to human NLRP3 (NLR family pyrin domain containing 3).



Western blot analysis of lysates from RAW 264.7 cells, using NLRP3 Rabbit mAb at 1:1000 dilution. Raw264.7 cells were treated with LPS (1  $\mu$ g/ml) at 37°C for 8 hours. Secondary antibody: HRP-conjugated Goat anti-Rabbit IgG (H+L) at 1:10000 dilution.

Lysates/proteins: 25 $\mu$ g per lane.  
Blocking buffer: 3% nonfat dry milk in TBST. Detection: ECL West Pico Plus. Exposure time: 10s.

Immunoprecipitation of NLRP3 from 300  $\mu$ g extracts of RAW 264.7 cells treated with LPS (1  $\mu$ g/ml, 8h) was performed using 3  $\mu$ g of NLRP3 Rabbit mAb. Rabbit IgG isotype control was used to precipitate the Control IgG sample. IP samples were eluted with 1X Laemmli Buffer. The Input lane represents 10% of the total input.

Western blot analysis of immunoprecipitates was conducted using NLRP3 Rabbit mAb at a dilution of 1:2000.