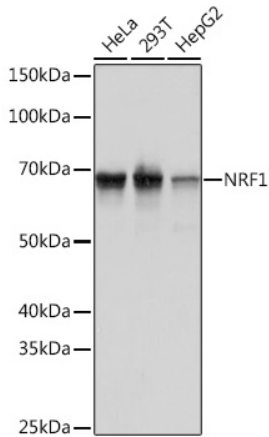
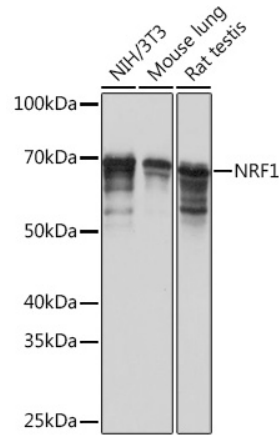


---

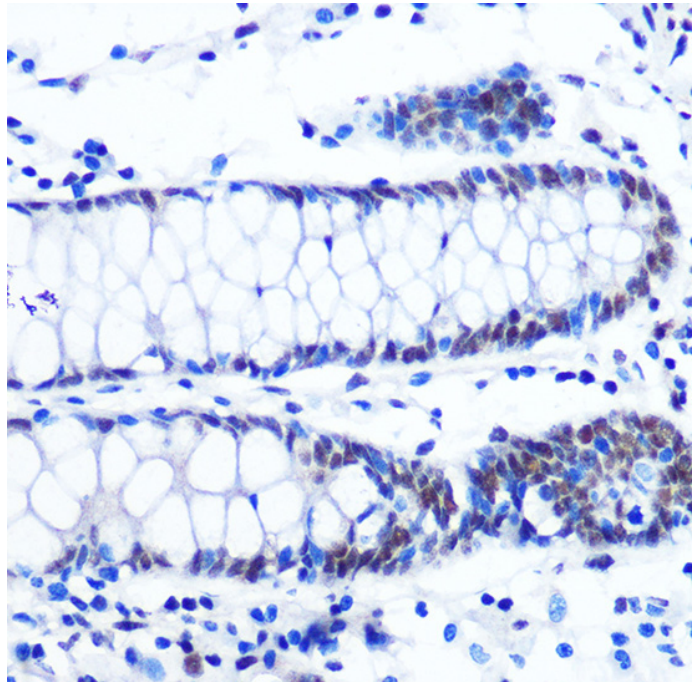
<b>Product name:</b>	NRF1
<b>Cat number:</b>	AB-81672
<b>Size:</b>	100 ug
<b>Clone:</b>	POLY
<b>Concentration:</b>	1mg/ml
<b>Host:</b>	Rabbit
<b>Isotype:</b>	IgG
<b>Immunogen:</b>	A synthetic peptide corresponding to a sequence within amino acids 300-400 of human NRF1
<b>Reactivity:</b>	Human, Mouse, Rat
<b>Applications:</b>	Western Blot 1:500 - 1:2000 Immunohistochemistry (P) 1:50 - 1:200 Immunoprecipitation 1:500 - 1:1000
<b>Molecular Weight:</b>	68 kDa
<b>Purification:</b>	Affinity Purified
<b>Form:</b>	Liquid
<b>Buffer:</b>	PBS with 0.02% sodium azide, 0.05% BSA, 50% glycerol, pH7.3.
<b>Storage:</b>	Store at -20°C. Avoid freeze / thaw cycles
<b>Background:</b>	This gene encodes a protein that homodimerizes and functions as a transcription factor which activates the expression of some key metabolic genes regulating cellular growth and nuclear genes required for respiration, heme biosynthesis, and mitochondrial DNA transcription and replication. The protein has also been associated with the regulation of neurite outgrowth. Alternative splicing results in multiple transcript variants. Confusion has occurred in bibliographic databases due to the shared symbol of NRF1 for this gene and for "nuclear factor (erythroid-derived 2)-like 1" which has an official symbol of NFE2L1.



Western blot analysis of extracts of various cell lines, using NRF1 Rabbit mAb at 1:10000 dilution. Secondary antibody: HRP Goat Anti-Rabbit IgG (H+L) at 1:10000 dilution. Lysates/proteins: 25ug per lane. Blocking buffer: 3% nonfat dry milk in TBST. Detection: ECL Basic Kit. Exposure time: 1s.



Western blot analysis of extracts of various cell lines, using NRF1 Rabbit mAb at 1:10000 dilution. Secondary antibody: HRP Goat Anti-Rabbit IgG (H+L) at 1:10000 dilution. Lysates/proteins: 25ug per lane. Blocking buffer: 3% nonfat dry milk in TBST. Detection: ECL Basic Kit. Exposure time: 5s.



Immunohistochemistry of paraffinembedded human colon using NRF1 Rabbit mAb at dilution of 1:100 (40x lens). Perform microwave antigen retrieval with 10 mM PBS buffer pH 7.2 before commencing with IHC staining protocol.