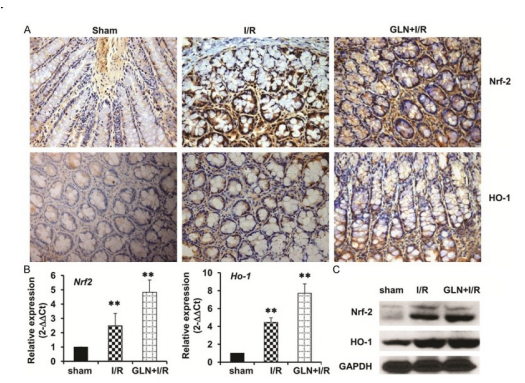
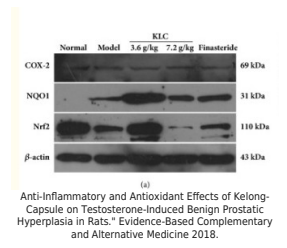
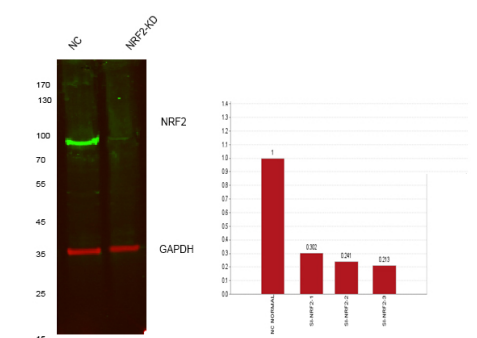
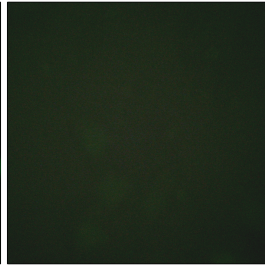
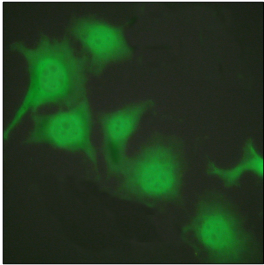


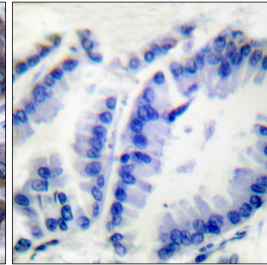
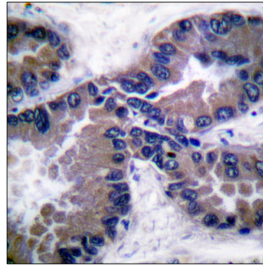
Product name: NRF2 Rabbit Polyclonal Antibody
Cat number: AB-84017
Conjugate: Unconjugated
Size: 100 ug
Clone: POLY
Concentration: 1mg/ml
Host: Rb
Isotype: IgG
Immunogen: The antiserum was produced against synthesized peptide derived from human Nrf2. AA range:556-605.
Reactivity: Hu, Ms,Rt
Applications: Western Blot: 1/500 - 1/2000 Immunohistochemistry: 1/100 - 1/300 Immunofluorescence: 1/200 - 1/1000 ELISA: 1/40000
Molecular Weight: 75-100kD
Purification: The antibody was affinity-purified from rabbit antiserum by affinity-chromatography using epitope-specific immunogen
Form: Liquid
Buffer: Liquid in PBS containing 50% glycerol, 0.5% BSA and 0.02% sodium azide.
Storage: Store at -20°C. Avoid repeated freeze-thaw cycles.
Background: This gene encodes a transcription factor which is a member of a small family of basic leucine zipper (bZIP) proteins. The encoded transcription factor regulates genes which contain antioxidant response elements (ARE) in their promoters; many of these genes encode proteins involved in response to injury and inflammation which includes the production of free radicals. Multiple transcript variants encoding different isoforms have been characterized for this gene.



*Glutamine ameliorates intestinal ischemiareperfusion injury in rats by activating the Nrf2/Are signaling pathway. International journal of clinical and experimental pathology 8.7 (2015): 7896



Immunofluorescence analysis of HUVEC cells, using Nrf2 Antibody. The picture on the right is blocked with the synthesized peptide.



Immunohistochemistry analysis of paraffin-embedded human lung carcinoma tissue, using Nrf2 Antibody. The picture on the right is blocked with the synthesized peptide.