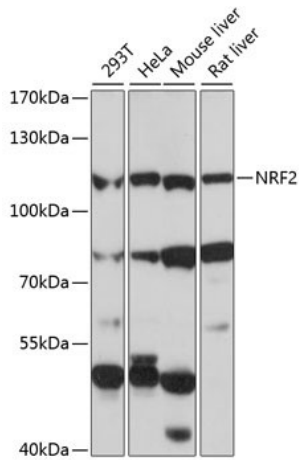
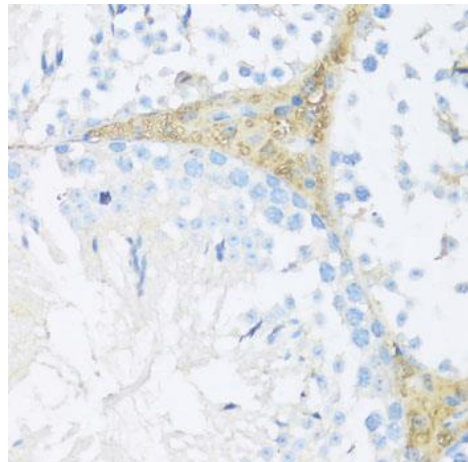


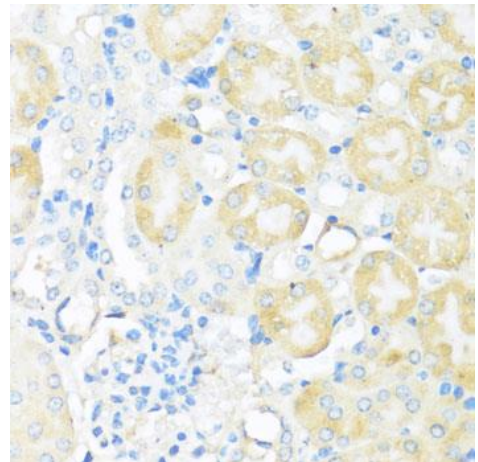
Product name:	NRF2 Rabbit Monoclonal Antibody
Cat number:	MAB-94130
Conjugate:	Unconjugated
Size:	100 ug
Clone:	SP611
Concentration:	1mg/ml
Host:	Rabbit
Isotype:	IgG
Immunogen:	The antiserum was produced against synthesized peptide derived from human Nrf2. AA range:556-605
Reactivity:	Human,Mouse,Rat
Applications:	Western Blot: 1:1000 Immunohistochemistry (paraffin tissues): 1:50 - 1:200 Immunocytochemistry: 1:50 - 1:200 Immunofluorescence: 1:50 - 1:200
Molecular Weight:	75-100kDa
Purification:	Aff. Pur.
Form:	Liquid
Buffer:	Liquid in PBS containing 50% glycerol, 0.5% BSA and 0.02% sodium azide.
Storage:	Store at -20°C. Avoid freeze / thaw cycles.
Background:	This gene encodes a transcription factor which is a member of a small family of basic leucine zipper (bZIP) proteins. The encoded transcription factor regulates genes which contain antioxidant response elements (ARE) in their promoters; many of these genes encode proteins involved in response to injury and inflammation which includes the production of free radicals . Multiple transcript variants encoding different isoforms have been characterized for this gene.



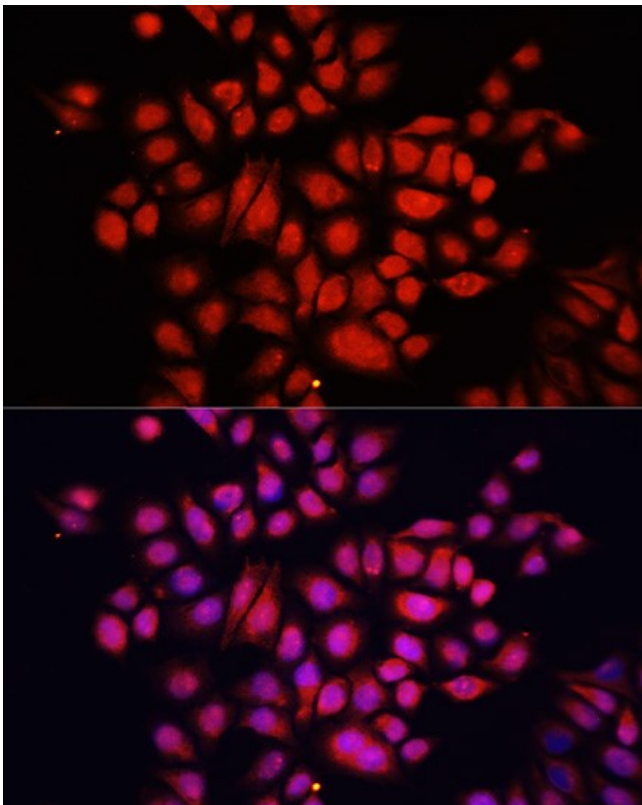
Western Blot - NFE2L2 antibody of various cell lines, using NRF2 antibody at 1:1000 dilution. Secondary antibody: HRP Goat Anti-Rabbit IgG (H+L) at 1:10,000 dilution. Lysates/proteins: 25ug per lane. Blocking buffer: 3% nonfat dry milk in TBST Detection: ECL West Pico Plus Kit Exposure time: 60s.



Immunohistochemistry - NFE2L2 antibody of paraffin-embedded mouse Leydig cells - dilution 1:100



Immunohistochemistry - NFE2L2 antibody of paraffin-embedded mouse kidney - dilution 1:100



Immunofluorescence analysis of HeLa cells using NFE2L2 antibody using at dilution of 1:100. Blue: DAPI for nuclear staining.