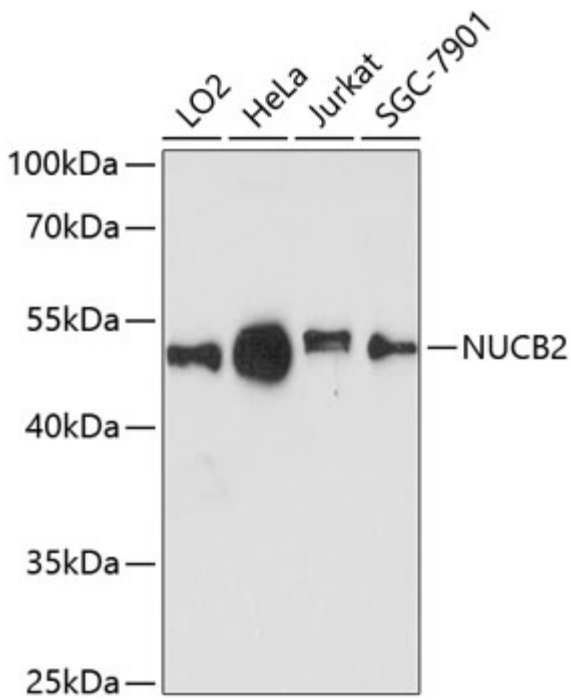


<b>Product name:</b>	NUCB2 Rabbit pAb
<b>Cat number:</b>	AB12641
<b>Conjugate:</b>	Unconjugated
<b>Size:</b>	100 ug
<b>Concentration:</b>	1mg/ml
<b>Host:</b>	Rabbit
<b>Isotype:</b>	IgG
<b>Immunogen:</b>	Recombinant protein. This information is considered to be commercially sensitive.
<b>Reactivity:</b>	Human, Rat
<b>Applications:</b>	WB 1:500 - 1:2000 ELISA Recommended starting concentration is 1 µg/mL. Please optimize the concentration based on your specific assay requirements.
<b>Molecular Weight:</b>	50kDa
<b>Purification:</b>	Affinity purification
<b>Form:</b>	liquid
<b>Buffer:</b>	PBS with 0.01% thimerosal, 50% glycerol, pH7.3.
<b>Storage:</b>	Store at -20°C. Avoid freeze / thaw cycles.
<b>Background:</b>	This gene encodes a protein with a suggested role in calcium level maintenance, eating regulation in the hypothalamus, and release of tumor necrosis factor from vascular endothelial cells. This protein binds calcium and has EF-folding domains.



Western blot analysis of various lysates using NUCB2 Rabbit pAb (A12641) at 1:3000 dilution.

Secondary antibody: HRP-conjugated Goat anti-Rabbit IgG (H+L) (AS014) at 1:10000 dilution.

Lysates/proteins: 25 $\mu$ g per lane.

Blocking buffer: 3% nonfat dry milk in TBST. Detection: ECL Enhanced Kit (RM00021).

Exposure time: 90s.