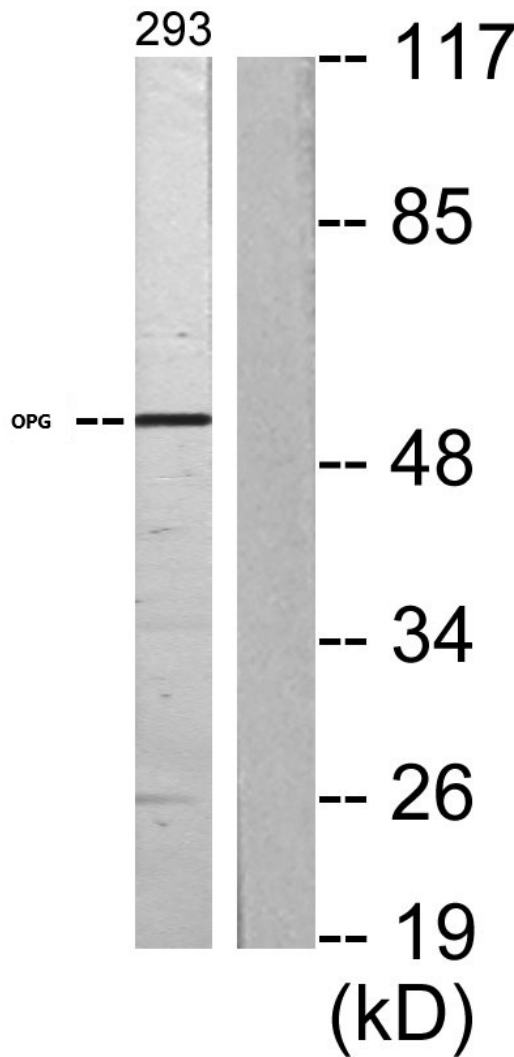
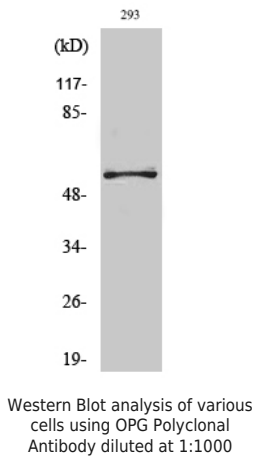
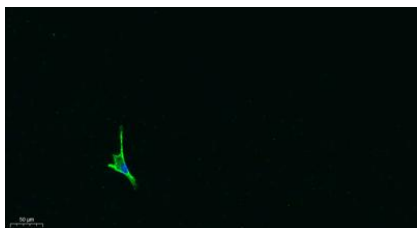
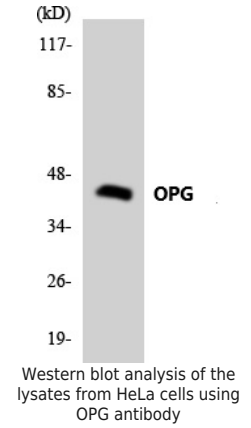
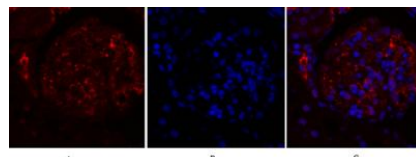

Product name:	OPG Rabbit Polyclonal Antibody
Cat number:	AB-E11701
Conjugate:	Unconjugated
Size:	100 ug
Clone:	POLY
Concentration:	1mg/ml
Host:	Rabbit
Isotype:	IgG
Immunogen:	The antiserum was produced against synthesized peptide derived from human TR11B . AA range:10-59
Reactivity:	Human;Mouse
Applications:	Western Blot: 1/500 - 1/2000.Immunohistochemistry(paraffin-embedded tissues): 1:100-300
Molecular Weight:	55kD
Purification:	The antibody was affinity-purified from rabbit antiserum by affinity-chromatography using epitope-specific immunogen.
Form:	Liquid
Buffer:	Liquid in PBS containing 50% glycerol, 0.5% BSA and 0.02% sodium azide.
Storage:	Store at -20°C. Avoid repeated freeze-thaw cycles.
Background:	The protein encoded by this gene is a member of the TNF-receptor superfamily. This protein is an osteoblast-secreted decoy receptor that functions as a negative regulator of bone resorption. This protein specifically binds to its ligand, osteoprotegerin ligand, both of which are key extracellular regulators of osteoclast development. Studies of the mouse counterpart also suggest that this protein and its ligand play a role in lymph-node organogenesis and vascular calcification. Alternatively spliced transcript variants of this gene have been reported, but their full length nature has not been determined.



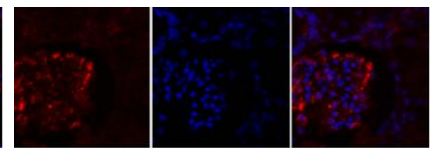
Western blot analysis of lysates from 293 cells, using OPG Antibody . The lane on the right is blocked with the synthesized peptide.



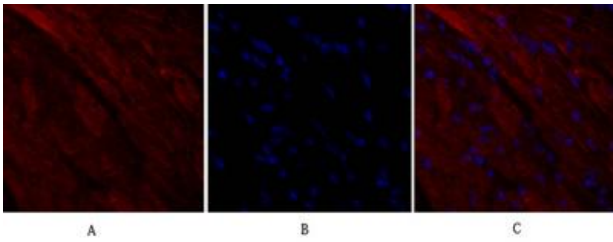
Immunofluorescence analysis of A549. 1,primary Antibody was diluted at 1:200(4°C overnight). 2. Goat Anti Rabbit IgG (H&L) - Alexa Fluor 488 Secondary antibody was diluted at 1:1000(room temperature, 50min).3. Picture B: DAPI(blue) 10min.



Immunofluorescence analysis of rat-kidney tissue. 1,OPG Polyclonal Antibody(red) was diluted at 1:200(4°C,overnight). 2. Cy3 labeled Secondary antibody was diluted at 1:300(room temperature, 50min).3. Picture B: DAPI(blue) 10min. Picture A:Target. Picture B: DAPI. Picture C: merge of A+B



Immunofluorescence analysis of rat-kidney tissue. 1,OPG Polyclonal Antibody(red) was diluted at 1:200(4°C,overnight). 2. Cy3 labeled Secondary antibody was diluted at 1:300(room temperature, 50min).3. Picture B: DAPI(blue) 10min. Picture A:Target. Picture B: DAPI. Picture C: merge of A+B



Immunofluorescence analysis of mouse-heart tissue. 1, OPG Polyclonal Antibody (red) was diluted at 1:200 (4°C, overnight). 2, Cy3 labeled Secondary antibody was diluted at 1:300 (room temperature, 50 min). 3, Picture B: DAPI (blue) 10 min. Picture A: Target. Picture B: DAPI. Picture C: merge of A+B