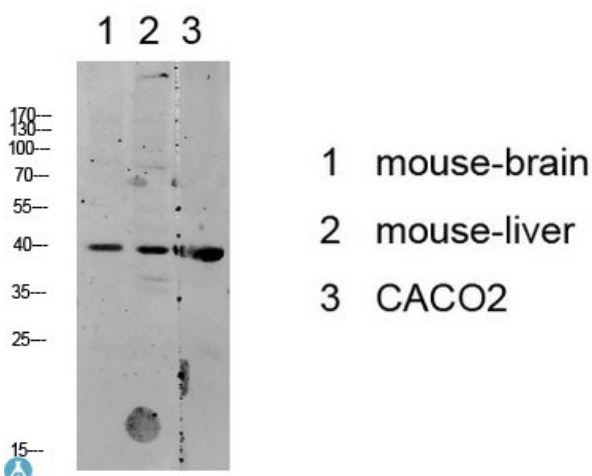


Product name:	p38 MAP Kinase
Cat number:	MAB-94449
Size:	100 ug
Clone:	3D7
Concentration:	1mg/ml
Host:	Rb
Isotype:	IgG
Immunogen:	Synthesized peptide derived from human p38 MAPK.
Reactivity:	Hu, Ms, Rt
Applications:	Western Blot: 1:500-2000 ELISA: 1:10000-20000
Molecular Weight:	42kDa
Purification:	The antibody was affinity-purified from rabbit antiserum by affinitychromatography using epitope-specific immunogen.
Form:	Liquid
Buffer:	Liquid in PBS containing 50% glycerol, 0.5% BSA and 0.02% sodium azide.
Storage:	Store at -20°C, and avoid repeat freeze-thaw cycles
Background:	Serine/threonine kinase which acts as an essential component of the MAP kinase signal transduction pathway. MAPK14 is one of the four p38 MAPKs which play an important role in the cascades of cellular responses evoked by extracellular stimuli such as proinflammatory cytokines or physical stress leading to direct activation of transcription factors.



Western blot analysis of various lysate, antibody was diluted at 1000. Secondary antibody was diluted at 1: 20000.