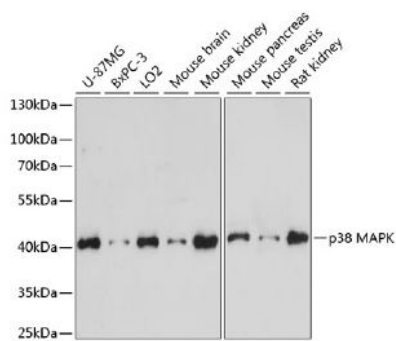
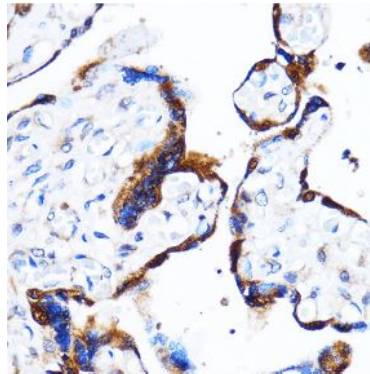
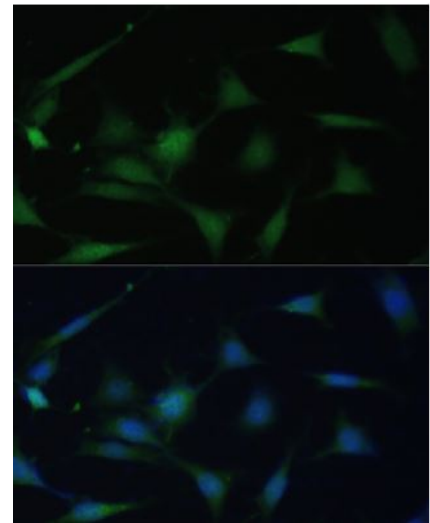

| | |
|--------------------------|---|
| Product name: | p38 MAP Kinase |
| Cat number: | AB-83572 |
| Size: | 100 ug |
| Clone: | POLY |
| Concentration: | 1mg/ml |
| Host: | Rb |
| Isotype: | IgG |
| Reactivity: | Hu, Ms, Rt |
| Applications: | Western blot: 1:1000 Immunohistochemistry: 1:50-1:200 Immunofluorescence: 1:50-1:100 Immunoprecipitation: 1:50-1:100 |
| Molecular Weight: | 41kDa |
| Purification: | Polyclonal antibodies are produced by immunizing animals with a synthetic peptide corresponding to the sequence of human p38 MAPK. Antibodies are purified by protein A and peptide affinity chromatography. |
| Form: | Liquid |
| Buffer: | PBS with 0.02% sodium azide, 50% glycerol, pH7.3 |
| Storage: | Store at -20°C, and avoid repeat freeze-thaw cycles |
| Background: | p38 MAP kinase (MAPK), also called RK (1) or CSBP (2), is the mammalian orthologue of the yeast HOG kinase that participates in a signaling cascade controlling cellular responses to cytokines and stress (1- 4). Four isoforms of p38 MAP kinase, p38 α , β , γ (also known as ERK6 or SAPK3) and δ (also known as SAPK4) have been identified. Similar to the SAPK/JNK pathway, p38 MAP kinase is activated by a variety of cellular stresses including osmotic shock, inflammatory cytokines, lipopolysaccharides (LPS), UV light and growth factors (1-5). MKK3, MKK6 and SEK activate p38 MAP kinase by phosphorylation at Thr180 and Tyr182. Activated p38 MAP kinase has been shown to phosphorylate and activate MAPKAP kinase 2 (3) and to phosphorylate the transcription factors ATF-2 (5), Max (6) and MEF2 (5-8). p38 MAP Kinase Antibody detects endogenous levels of total p38 α , - β or - γ MAPK protein. This antibody does not recognize p38 δ , JNK/SAPK or p44/42 MAPK. |



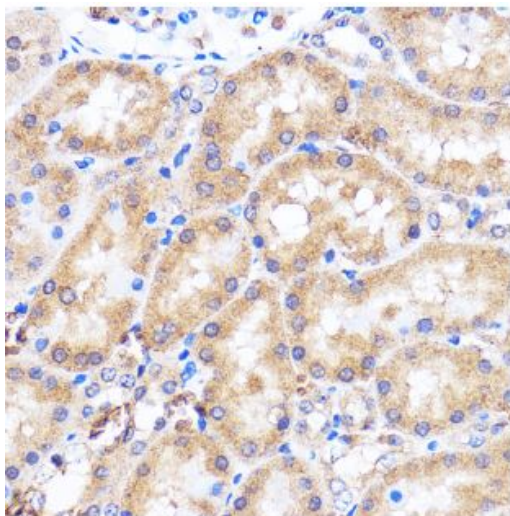
Western blot analysis of extracts of various cell lines, using p38 MAPK antibody at 1:1000 dilution. Secondary antibody: HRP Goat Anti-Rabbit IgG (H+L) at 1:10000 dilution. Lysates/proteins: 25ug per lane. Blocking buffer: 3% nonfat dry milk in TBST. Detection: ECL West Pico Plus. Exposure time: 30s.



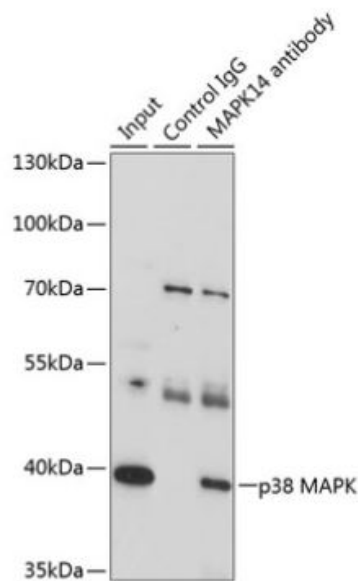
Immunohistochemistry of paraffinembedded Human placenta using p38 MAPK Rabbit pAb at dilution of 1:100 (40x lens).



Immunofluorescence analysis of NIH-3T3 cells using p38 MAPK antibody at dilution of 1:100. Blue: DAPI for nuclear staining.



Immunohistochemistry of paraffinembedded Rat kidney using p38 MAPK Rabbit pAb at dilution of 1:100 (40x lens).



Immunoprecipitation analysis of 200ug extracts of U-87MG cells, using 3 ug p38 MAPK antibody. Western blot was performed from the immunoprecipitate using p38 MAPK antibody at a dilution of 1:1000.