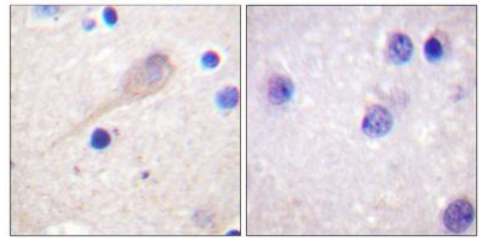
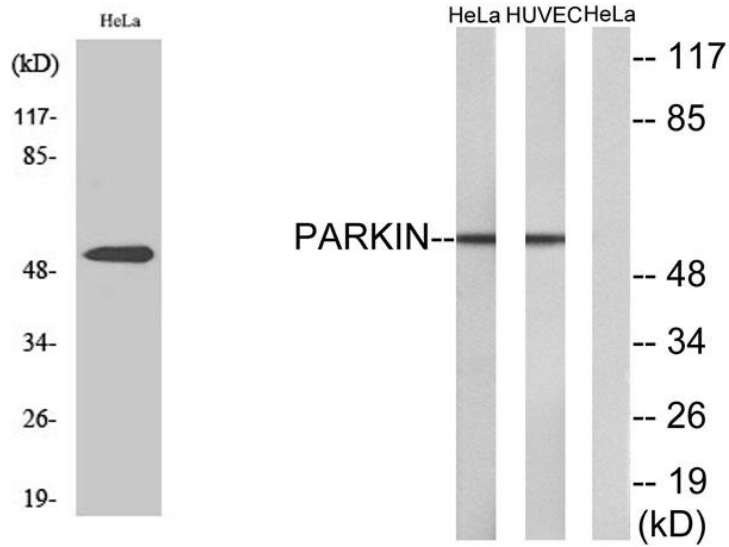

Product name:	Parkin Rabbit Polyclonal Antibody
Cat number:	AB-E12071
Conjugate:	Unconjugated
Size:	100 ug
Clone:	POLY
Concentration:	1mg/ml
Host:	Rabbit
Isotype:	IgG
Immunogen:	The antiserum was produced against synthesized peptide derived from human Parkin. AA range:101-150.
Reactivity:	Human, Mouse, Rat, Chicken
Applications:	Western Blot: 1/500 - 1/2000 Immunohistochemistry: 1/100 - 1/300
Molecular Weight:	55kD
Purification:	The antibody was affinity-purified from rabbit antiserum by affinity-chromatography using epitope-specific immunogen.
Form:	Liquid
Buffer:	Liquid in PBS containing 50% glycerol, 0.5% BSA and 0.02% sodium azide.
Storage:	Store at -20°C. Avoid repeated freeze-thaw cycles.
Background:	The precise function of this gene is unknown; however, the encoded protein is a component of a multiprotein E3 ubiquitin ligase complex that mediates the targeting of substrate proteins for proteasomal degradation. Mutations in this gene are known to cause Parkinson disease and autosomal recessive juvenile Parkinson disease. Alternative splicing of this gene produces multiple transcript variants encoding distinct isoforms. Additional splice variants of this gene have been described but currently lack transcript support.



Immunohistochemistry analysis of paraffin-embedded human brain tissue, using Parkin Antibody. The picture on the right is blocked with the synthesized peptide.