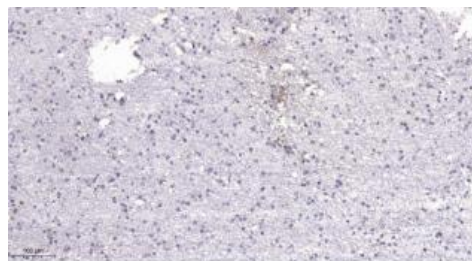
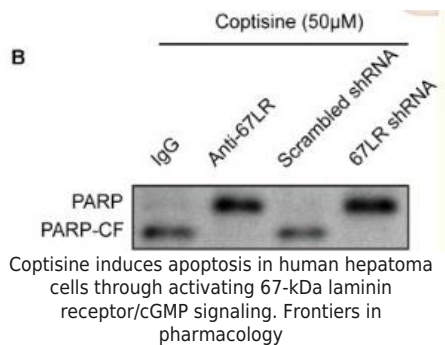


Product name:	PARP1
Cat number:	AB-83632
Conjugate:	Unconjugated
Size:	100 ug
Clone:	POLY
Concentration:	1mg/ml
Host:	Rabbit
Isotype:	IgG
Immunogen:	Synthesized peptide derived from the Internal region of human PARP- 1.
Reactivity:	Hu,Ms,Rt
Applications:	Western Blot : 1/500 - 1/2000 Immunohistochemistry (paraffin-embedded) : 1/50-1/200
Molecular Weight:	110KDa
Purification:	The antibody was affinity- purified from rabbit antiserum by affinity- chromatography using epitope- specific immunogen.
Form:	Liquid
Buffer:	Liquid in PBS containing 50% glycerol, 0.5% BSA and 0.02% sodium azide.
Storage:	Store at -20°C. Avoid repeated freeze-thaw cycles.
Background:	This gene encodes a chromatin-associated enzyme, poly(ADP- ribosyl) transferase, which modifies various nuclear proteins by poly(ADP-ribosyl)ation. The modification is dependent on DNA and is involved in the regulation of various important cellular processes such as differentiation,proliferation, and tumor transformation and also in the regulation of the molecular events involved in the recovery of cell from DNA damage. In addition, this enzyme may be the site of mutation in Fanconi anemia, and may participate in the pathophysiology of type I diabetes.



Immunohistochemical analysis of paraffin-embedded human brain. 1, Tris-EDTA,pH9.0 was used for antigen retrieval. 2 ,Antibody was diluted at 1:200(4° overnight. 3,Secondary antibody was diluted at 1:200(room temperature, 45min).