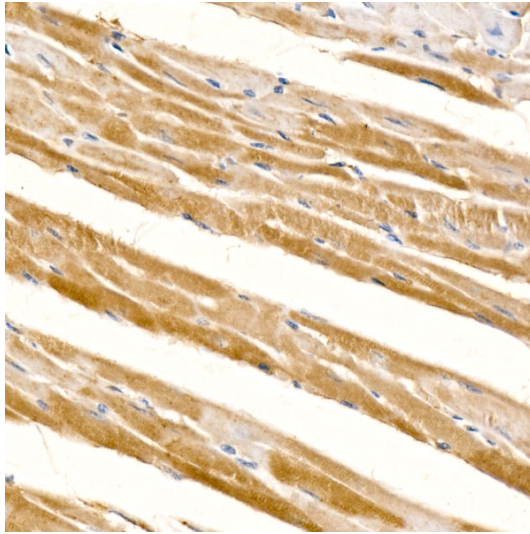
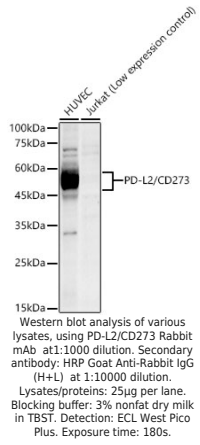
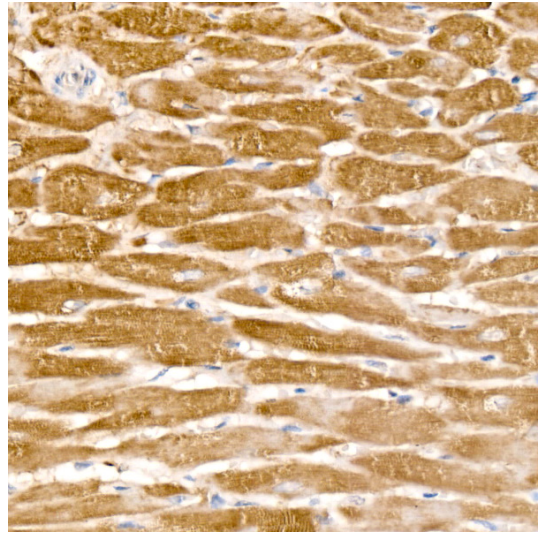


---

<b>Product name:</b>	PD-L2/CD273 Rabbit Monoclonal Antibody
<b>Cat number:</b>	MAB-95051
<b>Conjugate:</b>	Unconjugated
<b>Size:</b>	100 ug
<b>Clone:</b>	ARC60190
<b>Concentration:</b>	1mg/ml
<b>Host:</b>	Rabbit
<b>Isotype:</b>	IgG
<b>Immunogen:</b>	Recombinant protein of human PD-L2/CD273.
<b>Reactivity:</b>	Human,Mouse,Rat
<b>Applications:</b>	Western Blot: 1:500 - 1:1000 Immunohistochemistry(paraffin-embedded tissues): 1:50 - 1:200
<b>Molecular Weight:</b>	45-60kDa
<b>Purification:</b>	Affinity Purified
<b>Form:</b>	Liquid
<b>Buffer:</b>	PBS with 0.05% proclin300,0.05% BSA,50% glycerol,pH7.3.
<b>Storage:</b>	Store at -20°C. Avoid freeze / thaw cycles.
<b>Background:</b>	Involved in negative regulation of activated T cell proliferation; negative regulation of interferon-gamma production; and negative regulation of interleukin-10 production. Predicted to be located in plasma membrane. Predicted to be active in external side of plasma membrane. Biomarker of pulmonary tuberculosis.



Immunohistochemistry analysis of paraffin-embedded mouse heart using PD-L2/CD273 Rabbit mAb at dilution of 1:100 (40x lens). Perform high pressure antigen retrieval with 10 mM citrate buffer pH 6.0 before commencing with IHC staining protocol.



Immunohistochemistry analysis of paraffin-embedded rat heart using PD-L2/CD273 Rabbit mAb at dilution of 1:100 (40x lens). Perform high pressure antigen retrieval with 10 mM citrate buffer pH 6.0 before commencing with IHC staining protocol.