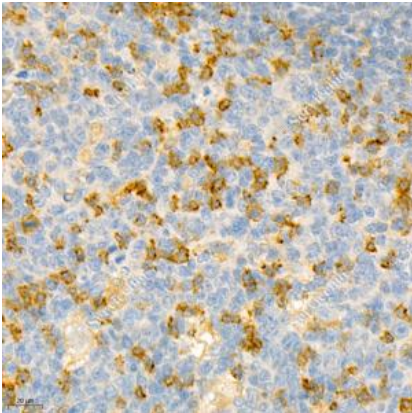
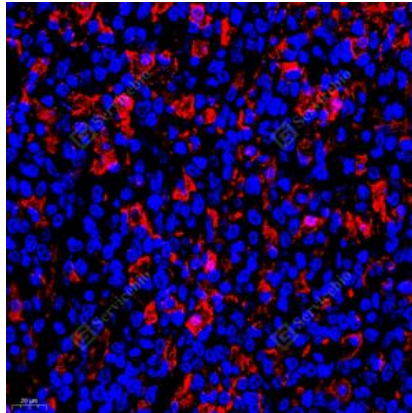
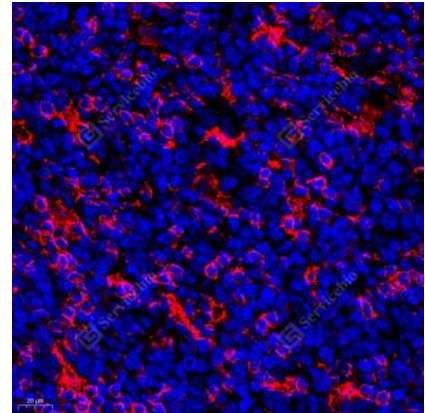

Product name:	PD1 Mouse Monoclonal Antibody
Cat number:	MABS12338
Conjugate:	unconjugated
Size:	100 µL
Clone:	IS-11
Concentration:	1mg/ml
Host:	Rabbit
Isotype:	IgG1, κ
Immunogen:	KLH conjugated Synthetic peptide corresponding to Mouse PD1
Reactivity:	Species, Human
Applications:	Applications Dilution IHC/IF 1: 400-1: 2400
Purification:	Affinity purification
Form:	Liquid
Buffer:	PBS with 0.15% ProClin300, 100 µg/mL BSA and 50% glycerol.
Storage:	Store at -20°C for one year. Avoid repeated freeze/thaw cycles.
Background:	Programmed cell death 1 (PD-1, also known as CD279) is an immunoinhibitory receptor that belongs to the CD28/CTLA-4 subfamily of the Ig superfamily. It is a 288 amino acid (aa) type I transmembrane protein composed of one Ig superfamily domain, a stalk, a transmembrane domain, and an intracellular domain containing an immunoreceptor tyrosine-based inhibitory motif (ITIM) as well as an immunoreceptor tyrosine-based switch motif (ITSM) . PD-1 is expressed during thymic development and is induced in a variety of hematopoietic cells in the periphery by antigen receptor signaling and cytokines.



IHC analysis of PD1. Sample: Human tonsil, 4% PFA 12-24h. Antigen retrieval: Citrate buffer, pressure cooker 2 min. Primary antibody: 1: 1200, 4°C overnight. Secondary antibody: HRP conjugated Goat Anti-Mouse IgG, 1: 200, RT, 1h.



IF analysis of PD1red. Sample: Human B-cell lymphoma, 4% PFA 12-24h. Antigen retrieval: Citrate buffer, pressure cooker 2 min. Blocking buffer: 3% BSA in PBS, RT, 30min. Primary antibody: 1: 400, 4°C overnight. Secondary antibody: Cy3 conjugated Goat Anti-Mouse IgG, 1: 300, RT, 1h.



IF analysis of PD1red. Sample: Human tonsil, 4% PFA 12-24h. Antigen retrieval: Citrate buffer, pressure cooker 2 min. Blocking buffer: 3% BSA in PBS, RT, 30min. Primary antibody: 1: 400, 4°C overnight. Secondary antibody: Cy3 conjugated Goat Anti-Mouse IgG, 1: 300, RT, 1h.