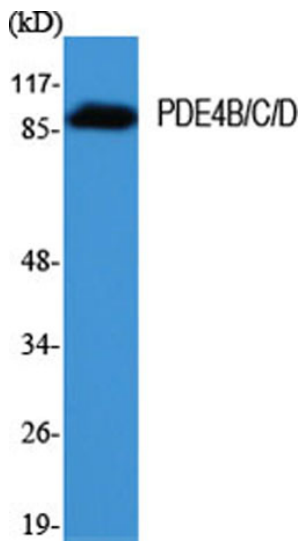
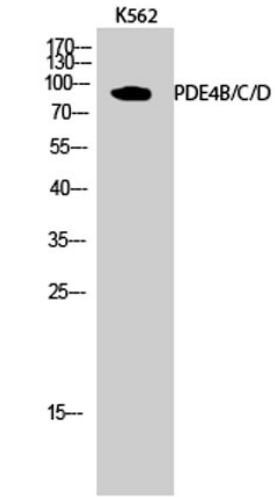
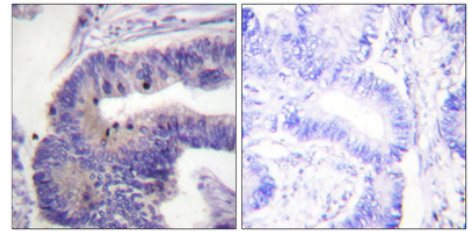

Product name:	PDE4B/C/D Rabbit Polyclonal Antibody
Cat number:	ABE3162
Conjugate:	unconjugated
Size:	100 ug
Clone:	Polyclonal
Concentration:	1 mg/ml
Host:	Rabbit
Isotype:	IgG
Immunogen:	The antiserum was produced against synthesized peptide derived from human PDE4D. AA range:156-205
Reactivity:	Human;Mouse;Rat
Applications:	Western Blot: 1/500 - 1/2000. Immunohistochemistry: 1/100 - 1/300. ELISA: 1/10000. Not yet tested in other applications.
Molecular Weight:	76kD
Purification:	The antibody was affinity-purified from rabbit antiserum by affinity-chromatography using epitope-specific immunogen.
Form:	liquid
Buffer:	Liquid in PBS containing 50% glycerol, 0.5% BSA and 0.02% sodium azide.
Storage:	Store at -20°C for 1 year. Avoid repeated freeze-thaw cycles.
Background:	This gene is a member of the type IV, cyclic AMP (cAMP)-specific, cyclic nucleotide phosphodiesterase (PDE) family. The encoded protein regulates the cellular concentrations of cyclic nucleotides and thereby play a role in signal transduction. Altered activity of this protein has been associated with schizophrenia and bipolar affective disorder. Alternative splicing and the use of alternative promoters results in multiple transcript variants encoding different isoforms. [provided by RefSeq, Jul 2014],



Western Blot analysis of various cells using PDE4B/C/D Polyclonal Antibody



Western Blot analysis of K562 cells using PDE4B/C/D Polyclonal Antibody



Immunohistochemistry analysis of paraffin-embedded human colon carcinoma tissue, using PDE4B/C/D Antibody. The picture on the right is blocked with the synthesized peptide.