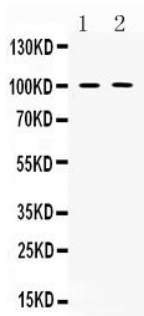
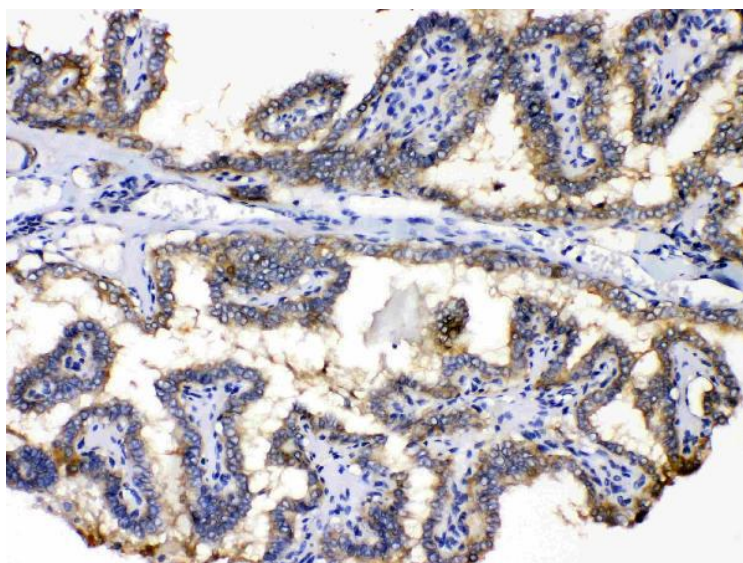


**Product name:** PDE5A  
**Cat number:** AB-84270  
**Size:** 100 ug  
**Clone:** POLY  
**Concentration:** 1mg/ml  
**Host:** Rb  
**Isotype:** IgG  
**Reactivity:** Hu, Rt  
**Applications:** Western blot: 1:1000 Immunohistochemistry(Paraffin-embedded Section):1:1000-1:2000  
**Purification:** Aff. Pur.  
**Form:** Liquid  
**Buffer:** Each vial contains 4mg Trehalose, 0.9mg NaCl, 0.2mg Na<sub>2</sub>HPO<sub>4</sub>, 0.05mg Na<sub>3</sub>.  
**Storage:** At -20°C for one year. It can also be aliquotted and stored frozen at -20°C for a longer time.Avoid repeated freezing and thawing.

**Background:** cGMP-specific phosphodiesterase type 5 is an enzyme from the phosphodiesterase class. It is found in various tissues, most prominently the corpus cavernosum and the retina. It has also been recently discovered to play a vital role in the cardiovascular system. Furthermore, PDE5A also plays a role in signal transduction by regulating the intracellular concentration of cyclic nucleotides. This PDE5A gene is mapped to 4q26.



Western blot analysis of PDE5A expression in rat lungextract (lane 1) and PANC-1 whole cell lysates(lane 2). PDE5A at 100KD was detected using rabbit anti-PDE5A Antigen Affinity purified polyclonal antibody at 0.5 µg/mL. The blot was developed using ECL West Pico Plus.



PDE5A was detected in paraffin-embedded sections of human thyroid cancer tissues using rabbit anti-PDE5A Antigen Affinity purified polyclonal antibody at 1 µg/mL. The immunohistochemical section was developed using SABC method