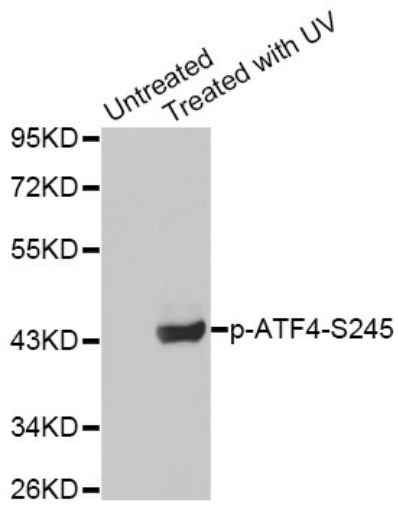
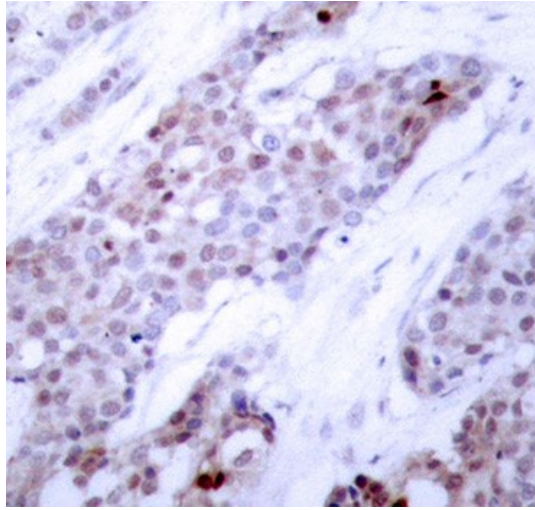


---

<b>Product name:</b>	Phospho-ATF4-(S245)
<b>Cat number:</b>	ABP-0309
<b>Conjugate:</b>	Unconjugated
<b>Size:</b>	100 ug
<b>Clone:</b>	Poly
<b>Concentration:</b>	1mg/ml
<b>Host:</b>	Rb
<b>Isotype:</b>	IgG
<b>Immunogen:</b>	A phospho specific peptide corresponding to residues surrounding S245 of human ATF4
<b>Reactivity:</b>	Hu
<b>Applications:</b>	Western blot: 1:1000 Immunohistochemistry (paraffin-embedded tissues): 1:50-1:100
<b>Molecular Weight:</b>	45kDa
<b>Purification:</b>	Affinity purification
<b>Form:</b>	liquid
<b>Buffer:</b>	PBS with 0.02% sodium azide, 50% glycerol, pH7.3.
<b>Storage:</b>	Store at -20°C. Avoid freeze / thaw cycles.
<b>Background:</b>	<p>This gene encodes a transcription factor that was originally identified as a widely expressed mammalian DNA binding protein that could bind a tax-responsive enhancer element in the LTR of HTLV-1. The encoded protein was also isolated and characterized as the cAMP-response element binding protein 2 (CREB-2). The protein encoded by this gene belongs to a family of DNA-binding proteins that includes the AP-1 family of transcription factors, cAMP-response element binding proteins (CREBs) and CREB-like proteins. These transcription factors share a leucine zipper region that is involved in protein-protein interactions, located C-terminal to a stretch of basic amino acids that functions as a DNA binding domain. Two alternative transcripts encoding the same protein have been described. Two pseudogenes are located on the X chromosome at q28 in a region containing a large inverted duplication.</p>



Western blot analysis of extracts from HeLa cells using Phospho-ATF4-S245 antibody.



Immunohistochemical analysis of paraffin-embedded human breast carcinoma tissue using Phospho-ATF4-S245 antibody