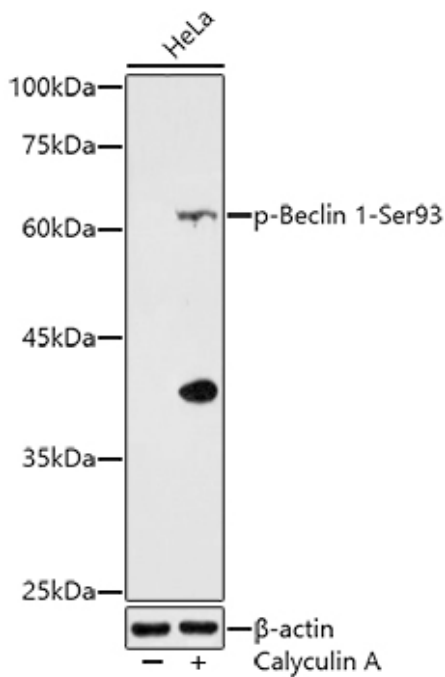


<b>Product name:</b>	Phospho-Beclin-1 (S93) Rabbit Monoclonal Antibody
<b>Cat number:</b>	MAB-94690
<b>Conjugate:</b>	Unconjugated
<b>Size:</b>	100 ug
<b>Clone:</b>	D9A5G
<b>Concentration:</b>	1mg/ml
<b>Host:</b>	Rb
<b>Isotype:</b>	IgG
<b>Immunogen:</b>	A synthetic phosphorylated peptide around S93 of human Beclin 1
<b>Reactivity:</b>	Hu
<b>Applications:</b>	WB 1:500 - 1:2000
<b>Molecular Weight:</b>	60KDa
<b>Purification:</b>	Affinity purification
<b>Form:</b>	liquid
<b>Buffer:</b>	PBS with 0.05% proclin300,50% glycerol,pH7.3.
<b>Storage:</b>	Store at -20°C. Avoid freeze / thaw cycles.
<b>Background:</b>	This gene encodes a protein that regulates autophagy, a catabolic process of degradation induced by starvation. The encoded protein is a component of the phosphatidylinositol-3-kinase (PI3K) complex which mediates vesicle-trafficking processes. This protein is thought to play a role in multiple cellular processes, including tumorigenesis, neurodegeneration and apoptosis. Alternative splicing results in multiple transcript variants.



Western blot analysis of extracts of HeLa cells, using Phospho-Beclin 1-Ser93 antibody at 1:500 dilution. HeLa cells were treated by Calyculin A (100 nM) at 37°C for 30 minutes. Secondary antibody: HRP Goat Anti-Rabbit IgG (H+L) at 1:10000 dilution.

Lysates/proteins: 25ug per lane.  
Blocking buffer: 3% nonfat dry milk in TBST. Detection: ECL Enhanced Kit.  
Exposure time: 180s.