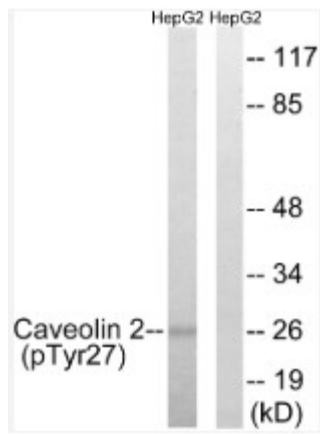

Product name:	Phospho-Caveolin-2 (Y27)
Cat number:	ABP10182
Conjugate:	Unconjugated
Size:	100 ug
Clone:	Poly
Concentration:	1mg/ml
Host:	Rb
Isotype:	IgG
Immunogen:	Synthesized peptide derived from human Caveolin-2 around the phosphorylation site of Y27.
Reactivity:	Hu
Applications:	Western Blot: 1:500-1:2000ELISA 1:10000
Molecular Weight:	26kDa
Purification:	The antibody was affinity-purified from rabbit antiserum by affinitychromatography using epitope-specific immunogen.
Form:	liquid
Buffer:	PBS with 0.02% sodium azide, 50% glycerol, pH7.3.
Storage:	Store at -20°C. Avoid freeze / thaw cycles.
Background:	May act as a scaffolding protein within caveolar membranes. Interacts directly with G-protein alpha subunits and can functionally regulate their activity. Acts as an accessory protein in conjunction with CAV1 in targeting to lipid rafts and driving caveolae formation. The Ser-36 phosphorylated form has a role in modulating mitosis in endothelial cells. Positive regulator of cellular mitogenesis of the MAPK signaling pathway. Required for the insulin stimulated nuclear translocation and activation of MAPK1 and STAT3, and the subsequent regulation of cell cycle progression .Phospho-Caveolin-2 (Y27) Polyclonal Antibody detects endogenous levels of Caveolin-2 protein only when phosphorylated at Y27.



Western Blot Image using
ABP10182 Phospho-Caveolin-2
(Y27) antibody